

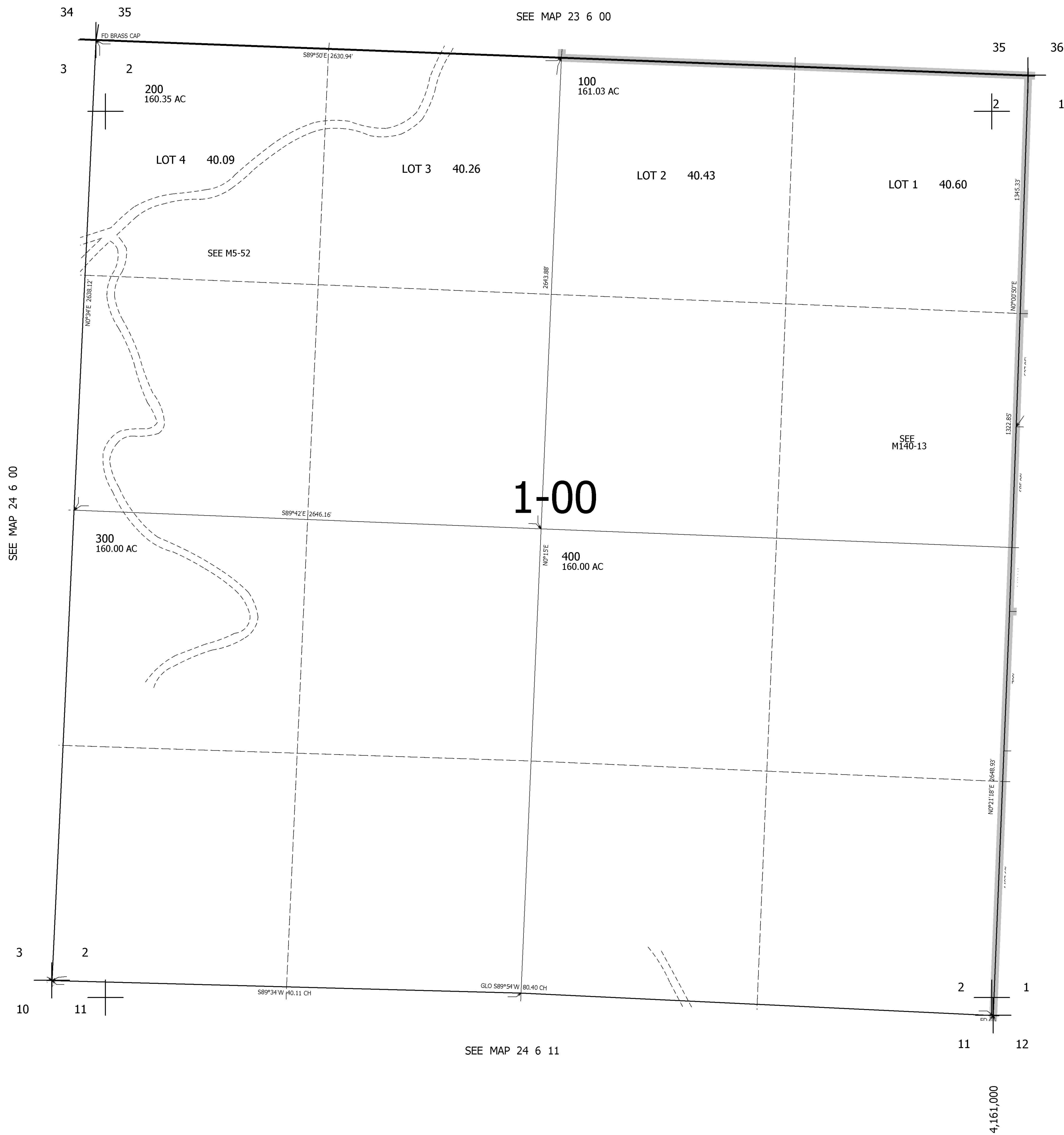
SEC.2 T.24S. R.6W. W.M.
DOUGLAS COUNTY

1" = 400'

REVISED ON

24 6 2

THIS MAP WAS PREPARED FOR
ASSESSMENT PURPOSE ONLY.



CANCELLED NOS
200M1

SEE MAP 24 6 1

683,000

4,161,000

24 6 2