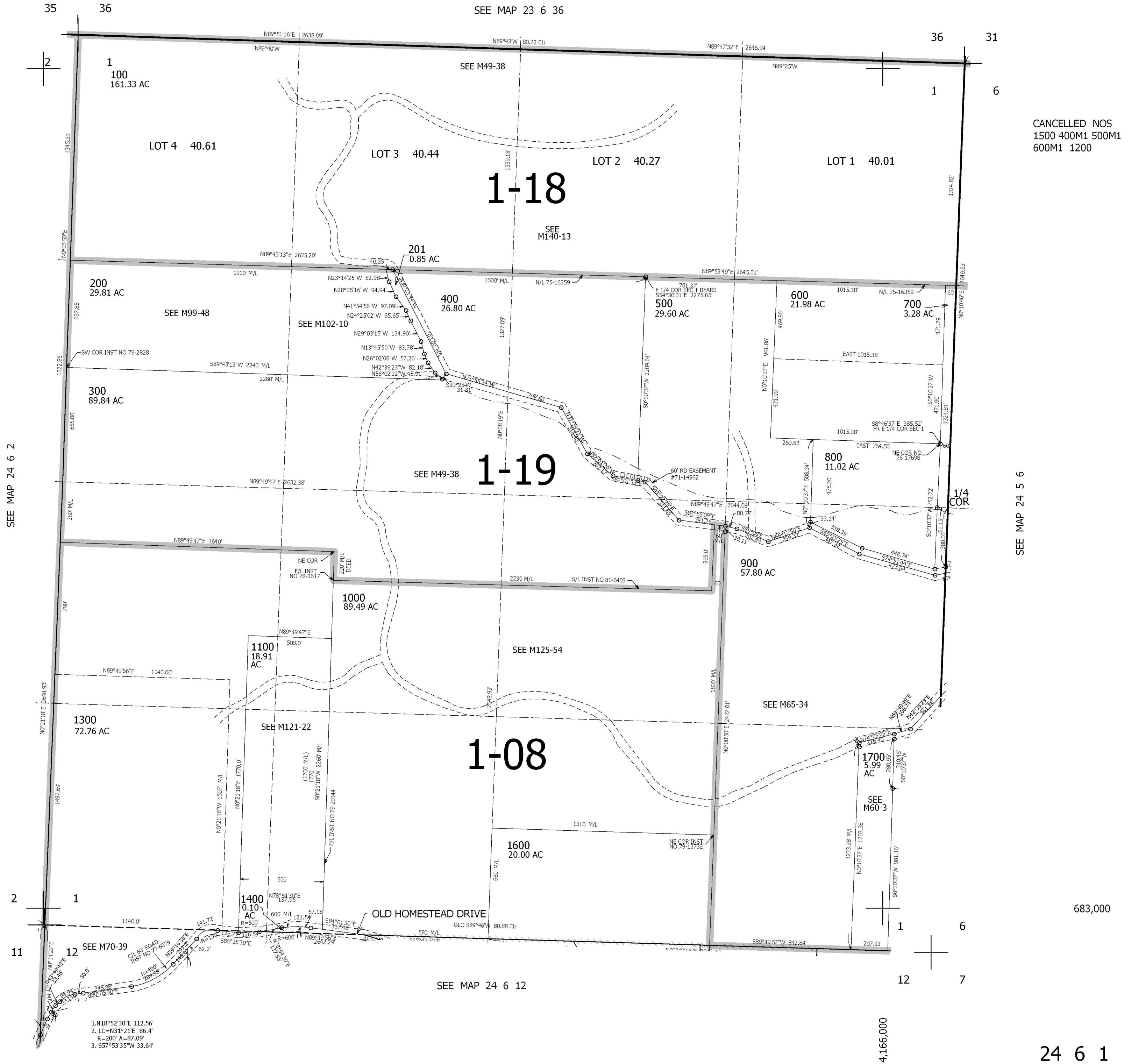


THIS MAP WAS PREPARED FOR ASSESSMENT PURPOSE ONLY.

SEC.1 T.24S. R.6W. W.M. DOUGLAS COUNTY 1" = 400'

REVISED ON 6-12-09

24 6 1



CANCELLED NOS 1500 400M1 500M1 600M1 1200

683,000

- 1. N18°52'30"E 112.56'
- 2. LC=N31°21'E 86.4'
- R=200' A=87.09'
- 3. S57°53'35"W 33.64'

24 6 1