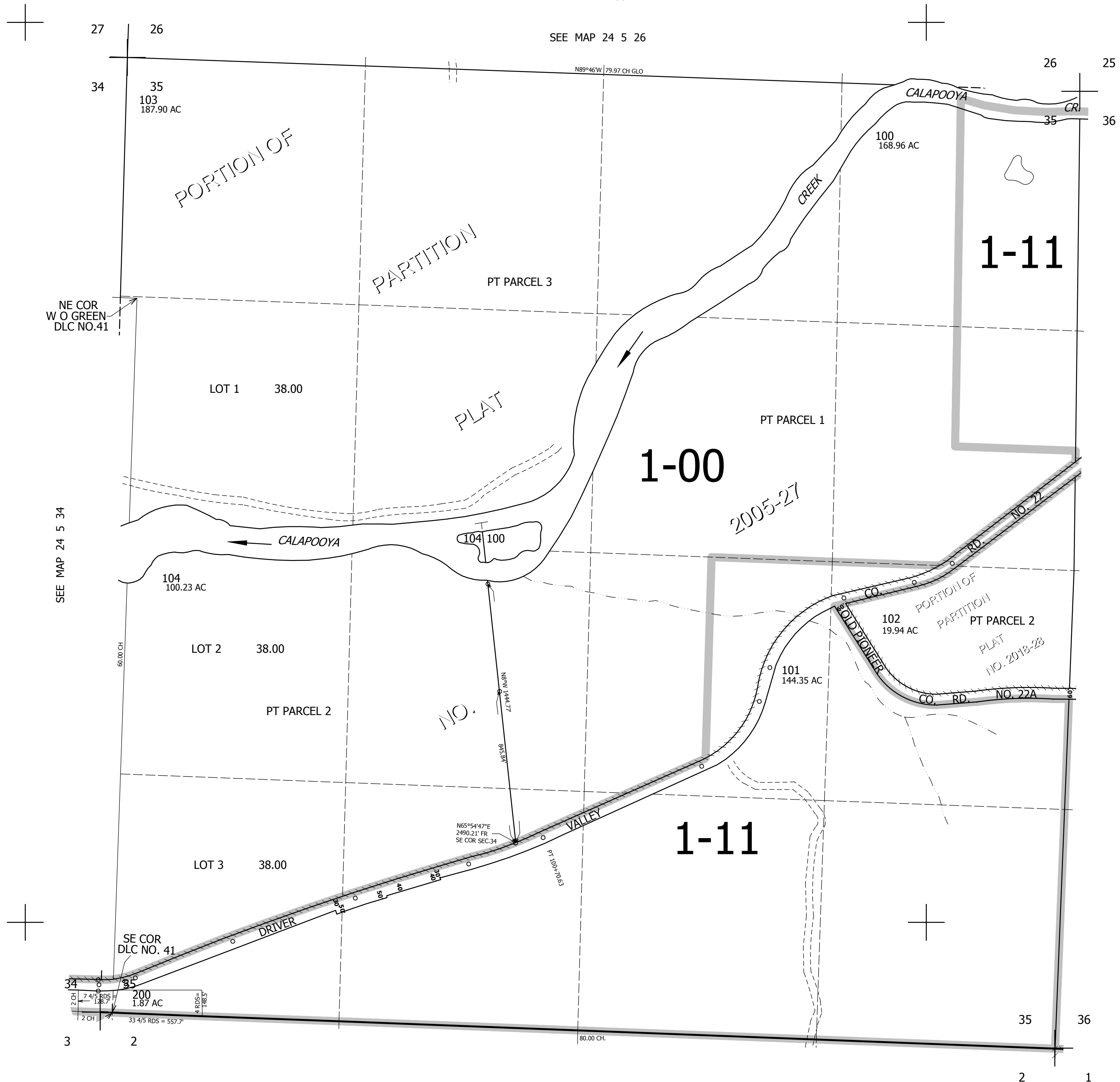


THIS MAP WAS PREPARED FOR ASSESSMENT PURPOSE ONLY.

SEC.35 T.24S. R.5W. W.M.
DOUGLAS COUNTY
1" = 400'

REVISED ON
10-18-18

24 5 35



CANCELLED NOS
105

SEE MAP 24 5 34

SEE MAP 24 5 36

656,000

SEE MAP 25 5 2

4,191,000

24 5 35