

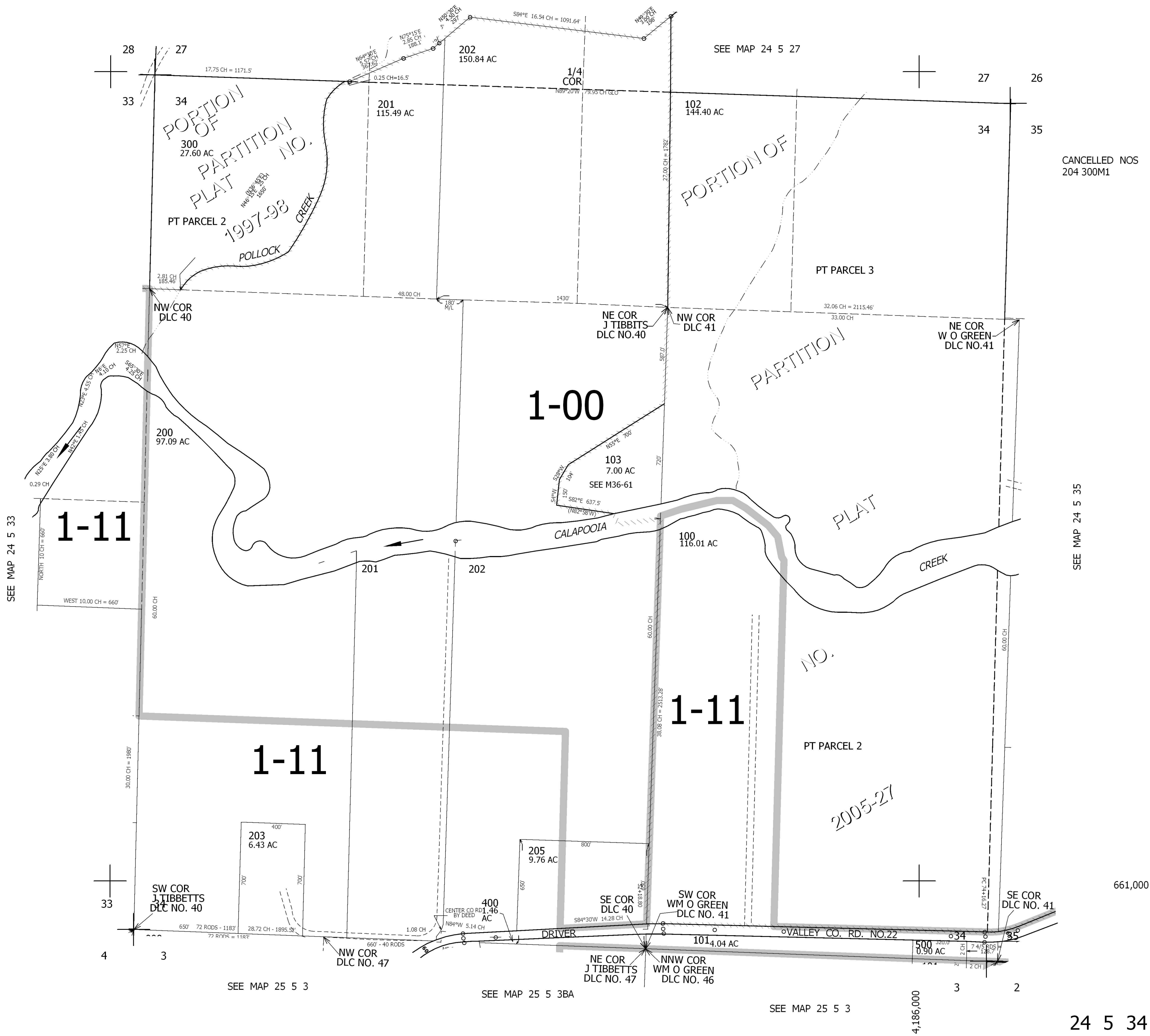
THIS MAP WAS PREPARED FOR ASSESSMENT PURPOSE ONLY.

SEC.34 T.24S. R.5W. W.M.
DOUGLAS COUNTY

1" = 400'

REVISED ON
11-20-07

24 5 34



CANCELLED NOS
204 300M1

SEE MAP 24 5 35

SEE MAP 24 5 33

661,000

24 5 34

4,186,000