

THIS MAP WAS PREPARED FOR
ASSESSMENT PURPOSE ONLY.

SW1/4 SE1/4 SEC.33 T.24S. R.5W. W.M.
DOUGLAS COUNTY
1" = 100'

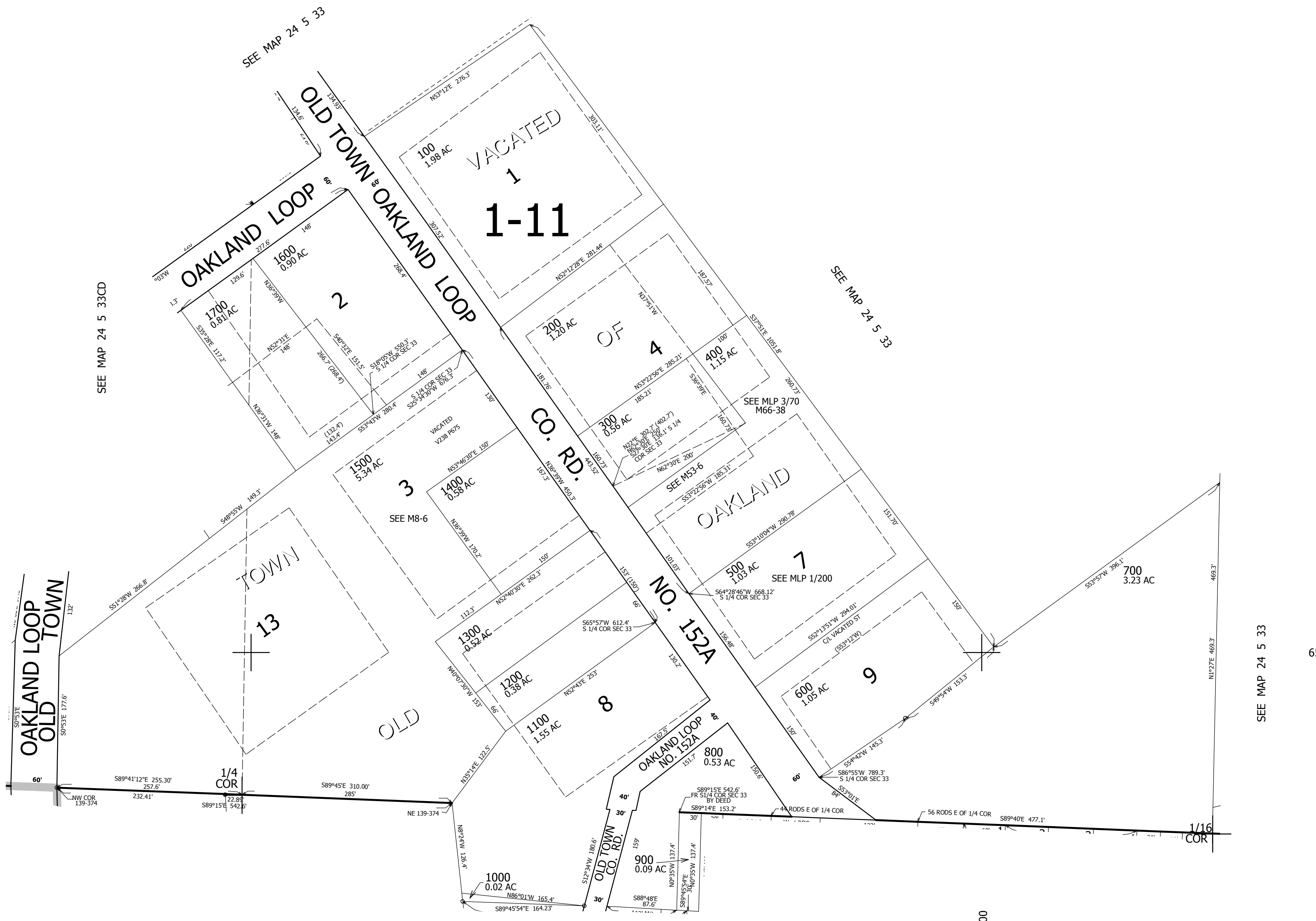
REVISED ON
5-23-13

24 5 33DC

1/16 COR

1/16 COR

CANCELLED NOS



SEE MAP 24 5 33CD

SEE MAP 24 5 33

SEE MAP 24 5 33

656,000

SEE MAP 25 5 4B

4,179,500

24 5 33DC