

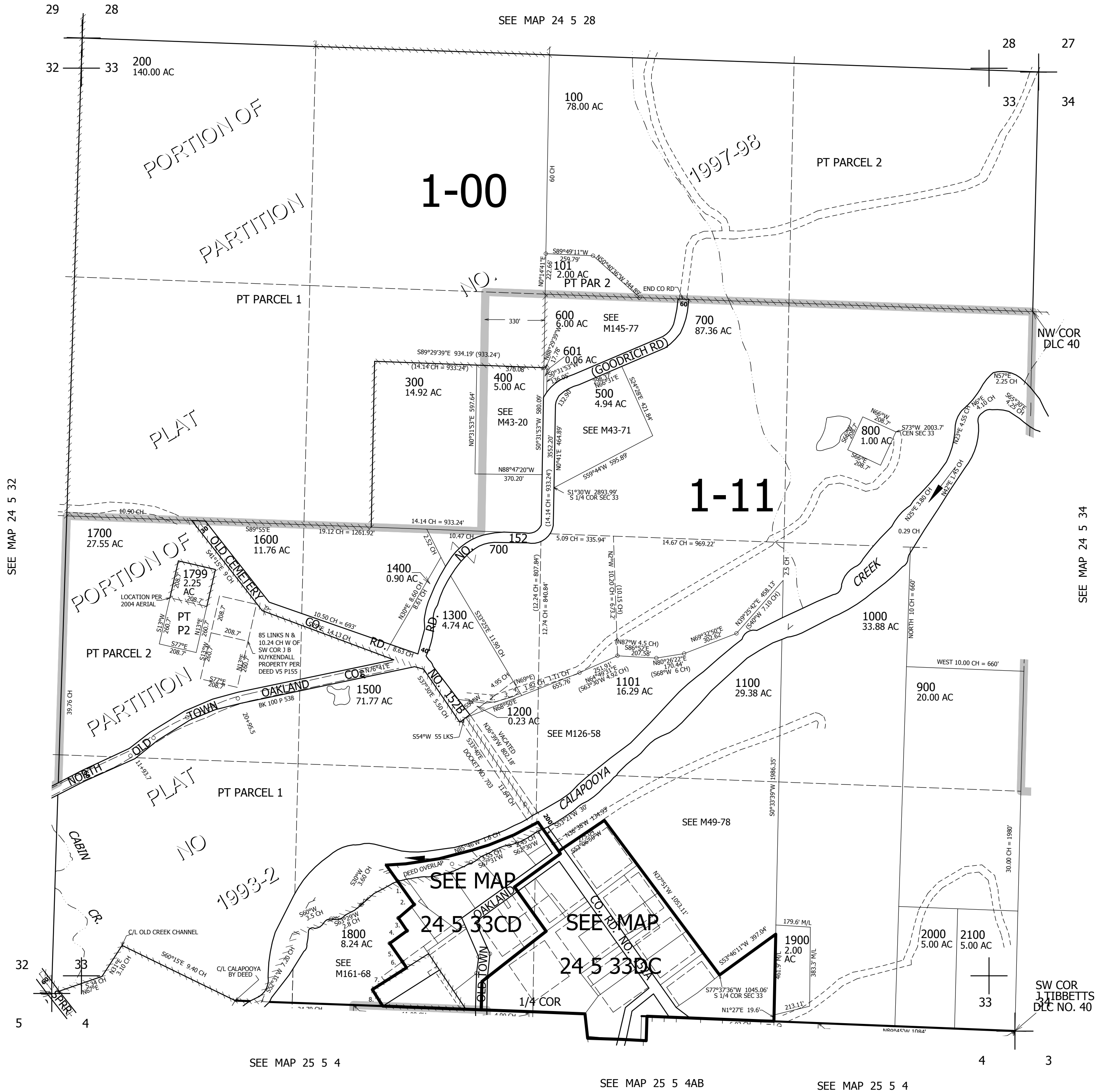
THIS MAP WAS PREPARED FOR ASSESSMENT PURPOSE ONLY.

SEC.33 T.24S. R.5W. W.M.
DOUGLAS COUNTY

1" = 400'

REVISED ON
7-5-11

24 5 33
& INDEX



661,000

CANCELLED NOS
1701 1801 1201
1301 1702 100M1
1802

- PARCEL 1300**
1. S86°40'28"E 199.65' (SURVEY)
 2. 77°04'51"E 63.09'
 3. N68°56'35"E 99.65'
 4. N44°23'44"E 41.07'

- PARCEL 1800**
1. N37°W 3.5 CH, M/L
 2. N37°13'W 160.3'
 3. N58°E 1.74 CH.
 4. N48°40'E 118.8'
 5. N37°W 1.32 CH.
 6. N36°43'W 86.6'
 7. N58°E 1.81 CH.
 8. N52°26'E 118.1'
 9. N37°W 1.93 CH.
 10. N38°07'W 119'
 11. N38°33'10"W 44.31'
 12. S55°21'35"W 227.5'
 13. S34°38'25"E 104.18'

24 5 33
& INDEX

4,181,000