

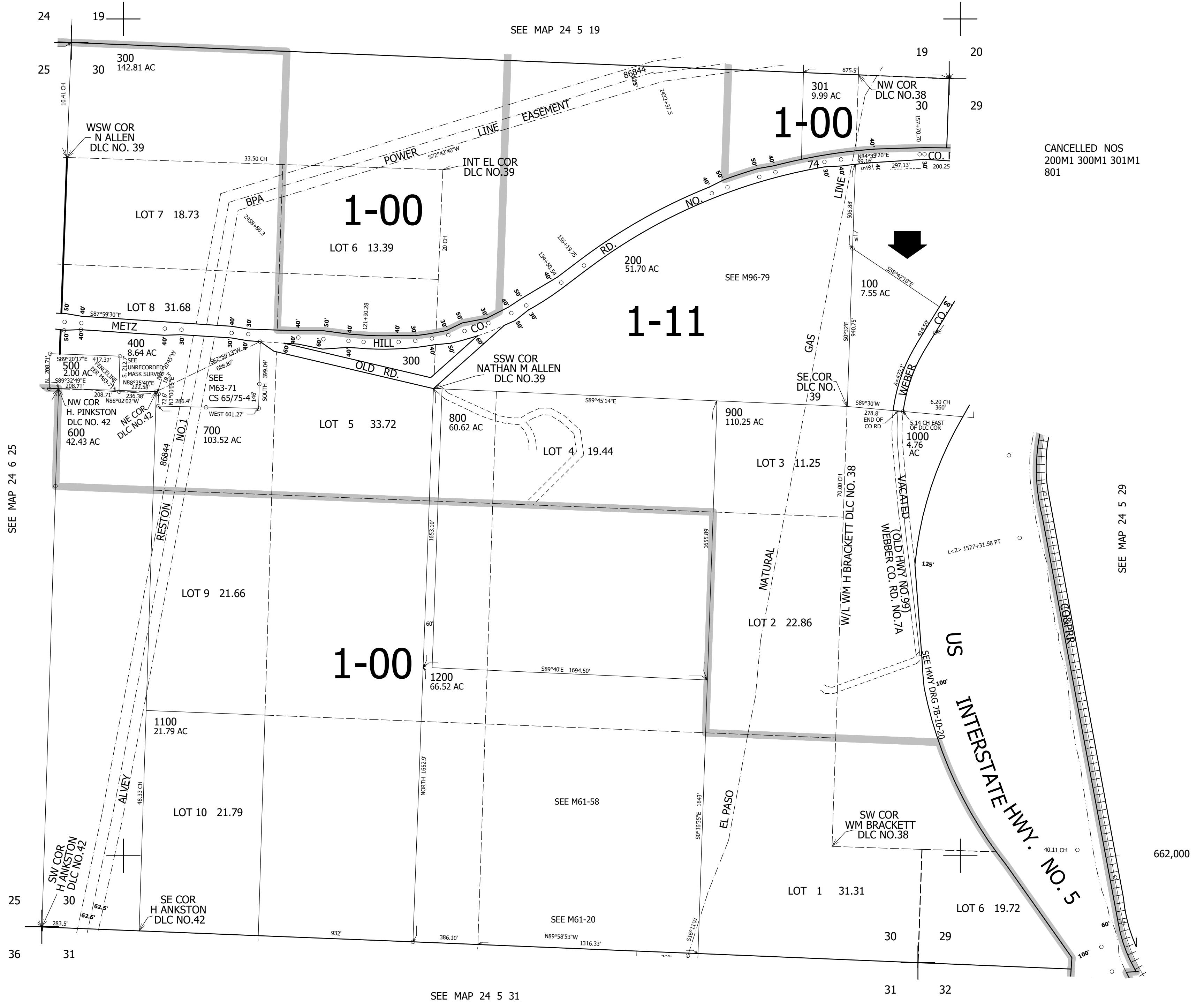
THIS MAP WAS PREPARED FOR ASSESSMENT PURPOSE ONLY.

SEC.30 T.24S. R.5W. W.M. DOUGLAS COUNTY

1" = 400'

REVISED ON 9-23-10

SEE MAP 24 5 19



CANCELLED NOS 200M1 300M1 301M1 801

SEE MAP 24 6 25

SEE MAP 24 5 29

SEE MAP 24 5 31

4,171,000