

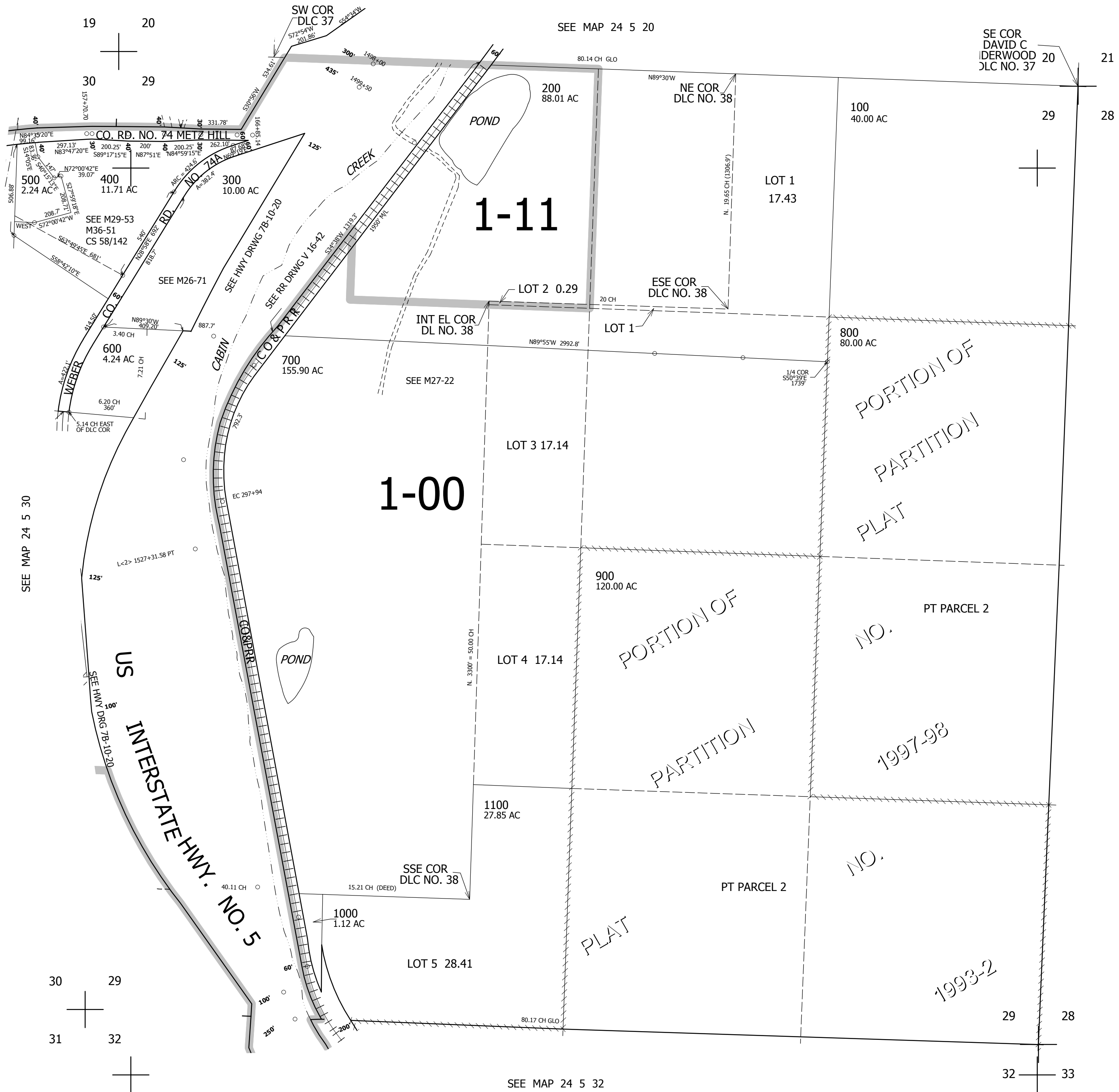
THIS MAP WAS PREPARED FOR ASSESSMENT PURPOSE ONLY.

SEC.29 T.24S. R.5W. W.M. DOUGLAS COUNTY

REVISED ON 9-23-10

24 5 29

1" = 400'



666,000

CANCELLED NOS 100M1

SEE MAP 24 5 28

SEE MAP 24 5 32

4,176,000

24 5 29