

THIS MAP WAS PREPARED FOR ASSESSMENT PURPOSE ONLY.

SEC.27 T.24S. R.5W. W.M. DOUGLAS COUNTY

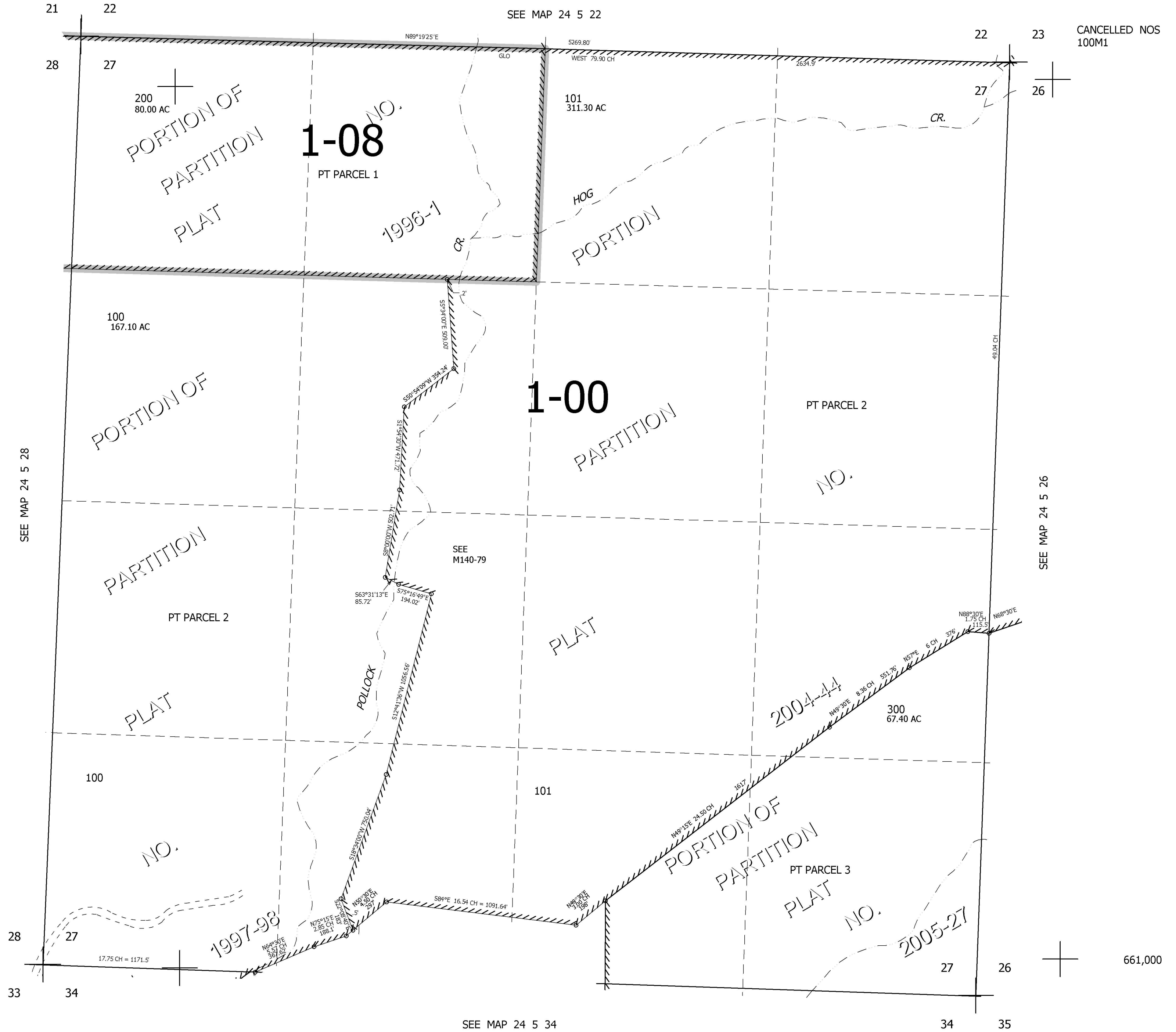
REVISED ON 3-29-05

24 5 27

1" = 400'

SEE MAP 24 5 22

CANCELLED NOS 100M1



SEE MAP 24 5 28

SEE MAP 24 5 26

SEE MAP 24 5 34

661,000

4,187,000

24 5 27