

THIS MAP WAS PREPARED FOR ASSESSMENT PURPOSE ONLY.

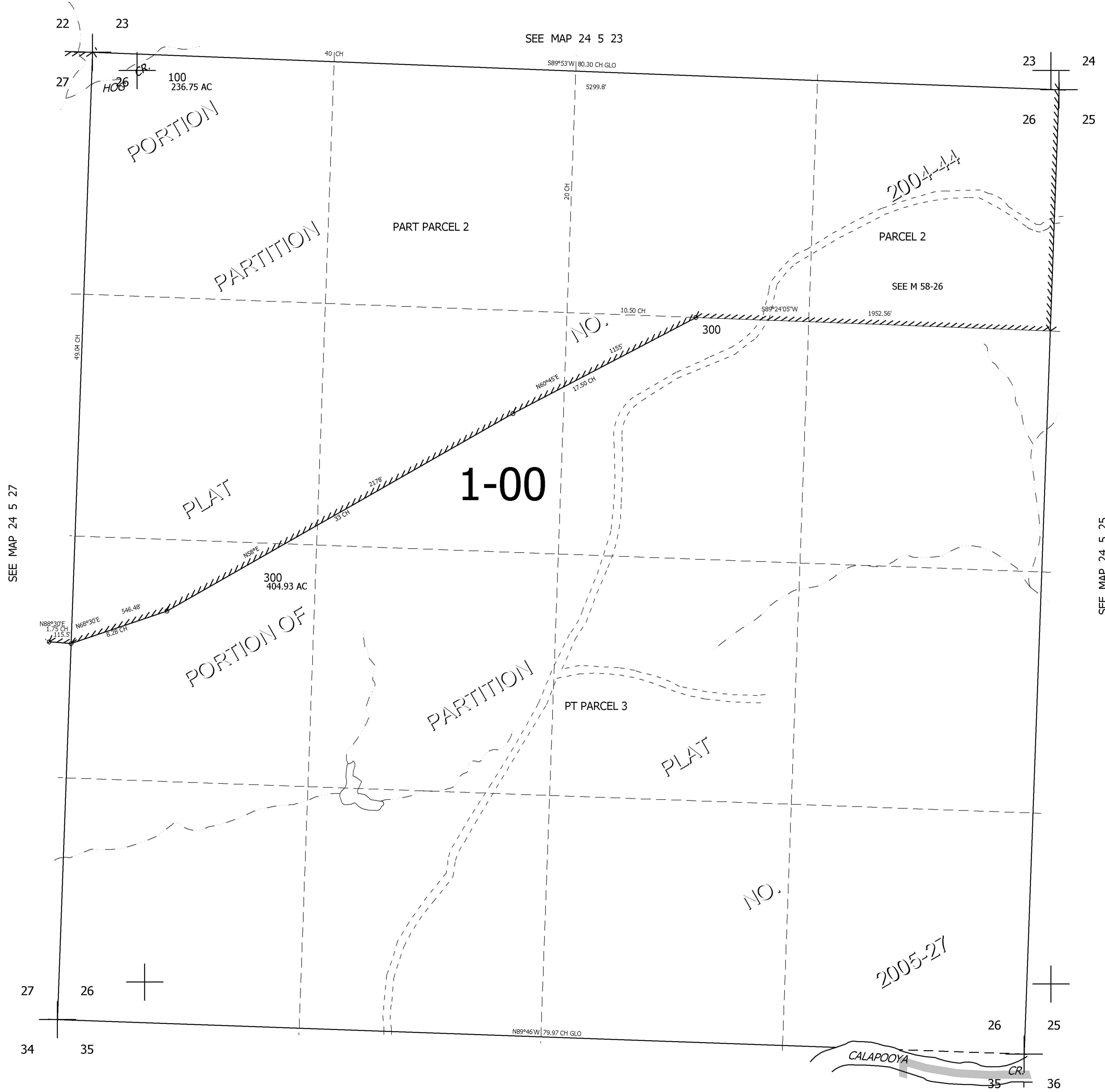
SEC.26 T.24S. R.5W. W.M. DOUGLAS COUNTY

REVISED ON 3-29-05

24 5 26

1" = 400'

CANCELLED NOS 200M1 200



SEE MAP 24 5 27

SEE MAP 24 5 25

SEE MAP 24 5 35

4,187,000

661,000

24 5 26