

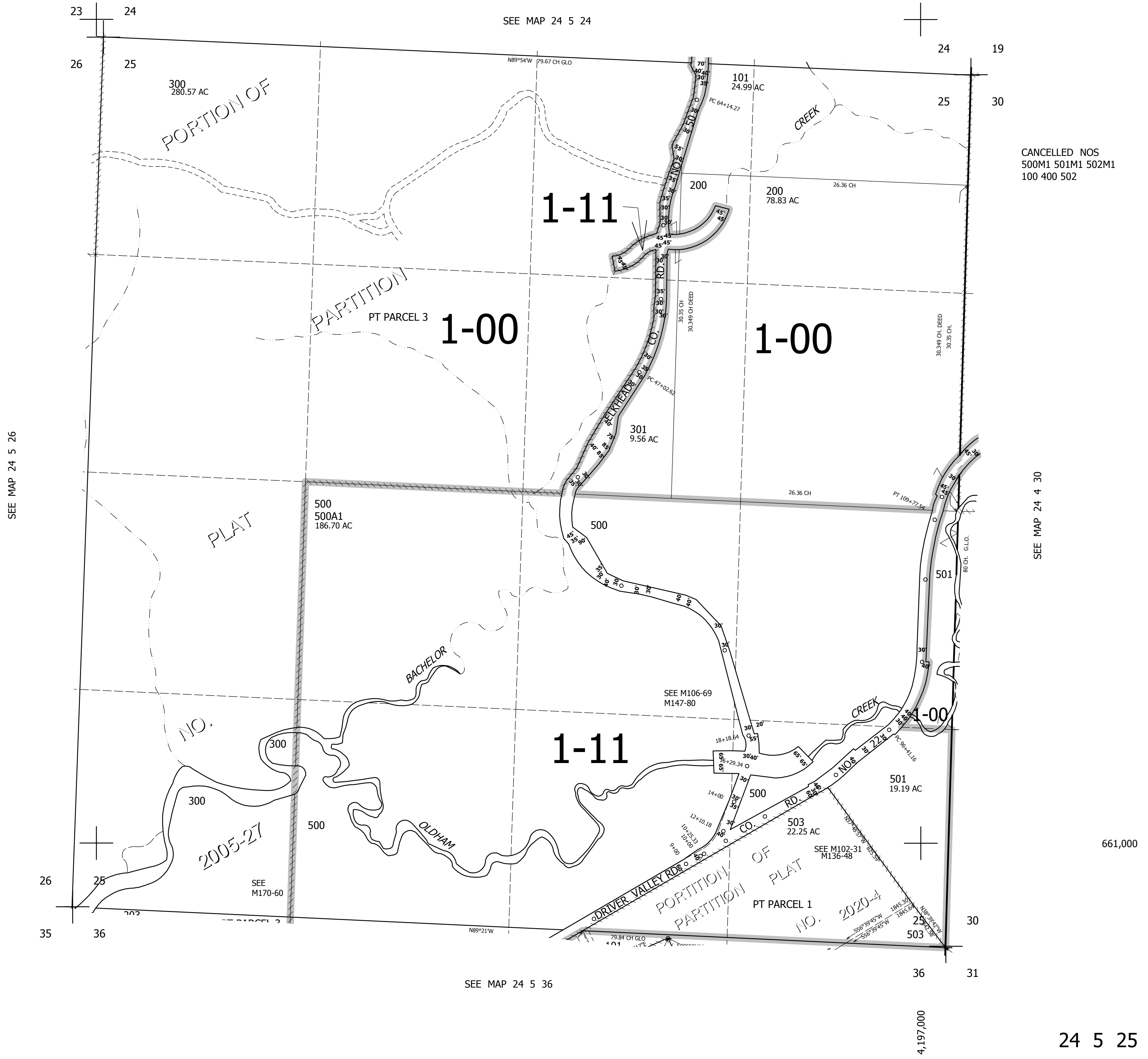
THIS MAP WAS PREPARED FOR ASSESSMENT PURPOSE ONLY.

SEC.25 T.24S. R.5W. W.M.  
DOUGLAS COUNTY

1" = 400'

REVISED ON  
1-15-20

24 5 25



CANCELLED NOS  
500M1 501M1 502M1  
100 400 502

SEE MAP 24 5 26

SEE MAP 24 4 30

SEE MAP 24 5 36

4,197,000

24 5 25