

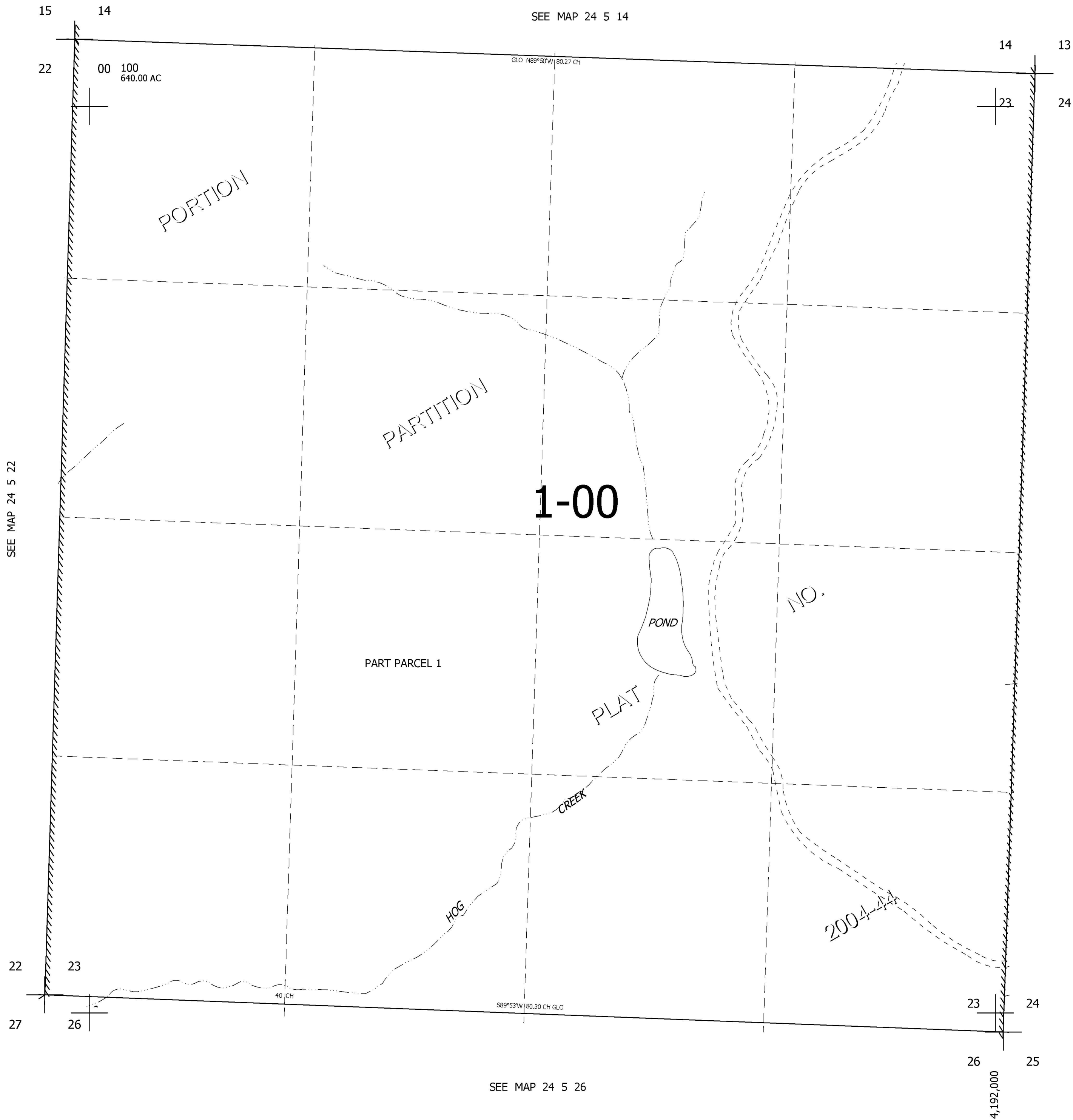
THIS MAP WAS PREPARED FOR
ASSESSMENT PURPOSE ONLY.

SEC.23 T.24S. R.5W. W.M.
DOUGLAS COUNTY

REVISED ON
8-13-04

24 5 23

1" = 400'



SEE MAP 24 5 14

CANCELLED NOS
101

SEE MAP 24 5 22

SEE MAP 24 5 24

666,000

SEE MAP 24 5 26

24 5 23