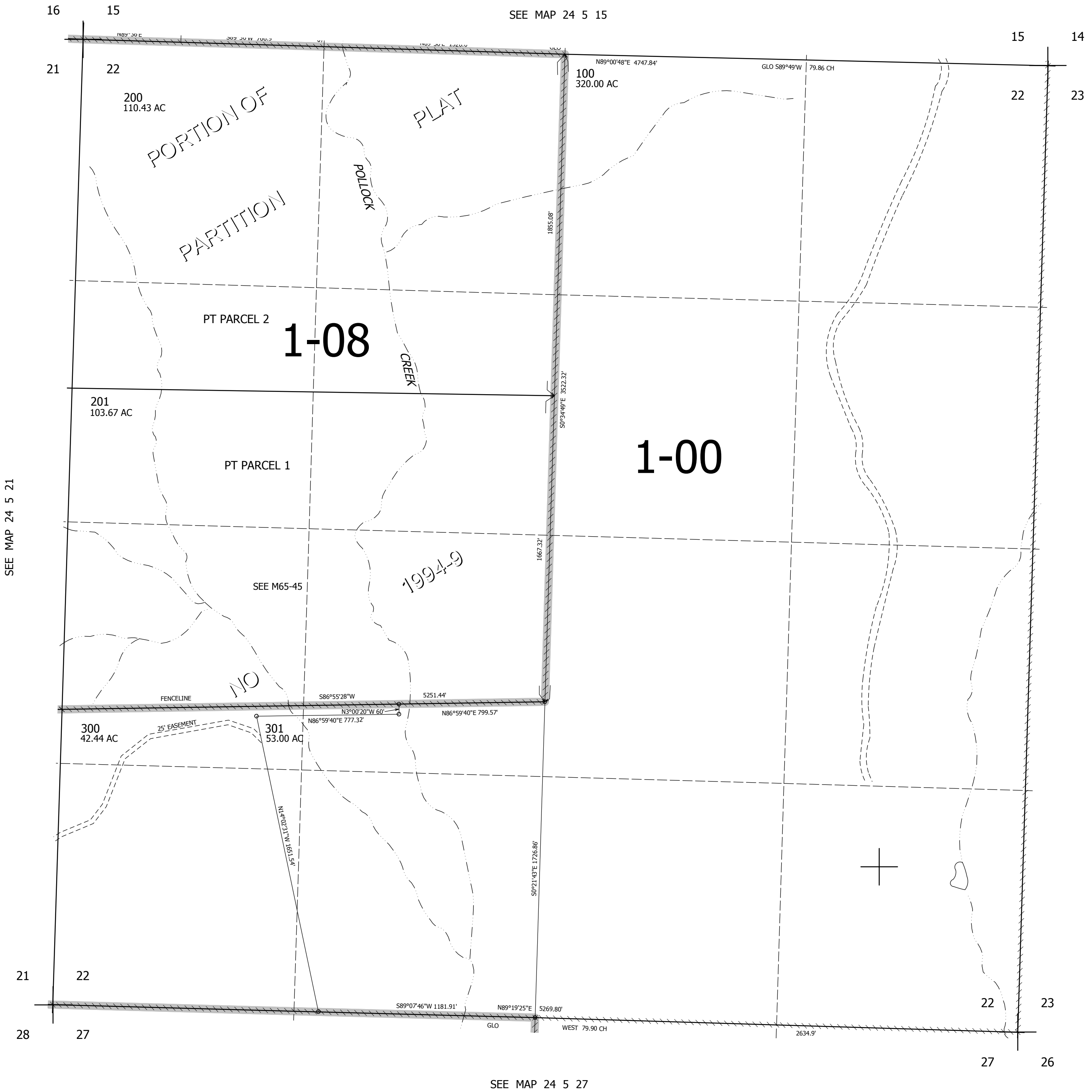


THIS MAP WAS PREPARED FOR ASSESSMENT PURPOSE ONLY.

SEC.22 T.24S. R.5W. W.M.
DOUGLAS COUNTY
1" = 400'

REVISED ON
6-29-12

24 5 22



CANCELLED NOS
200M1 201M1

SEE MAP 24 5 21

SEE MAP 24 5 23

SEE MAP 24 5 27

667,000

4,186,000

24 5 22