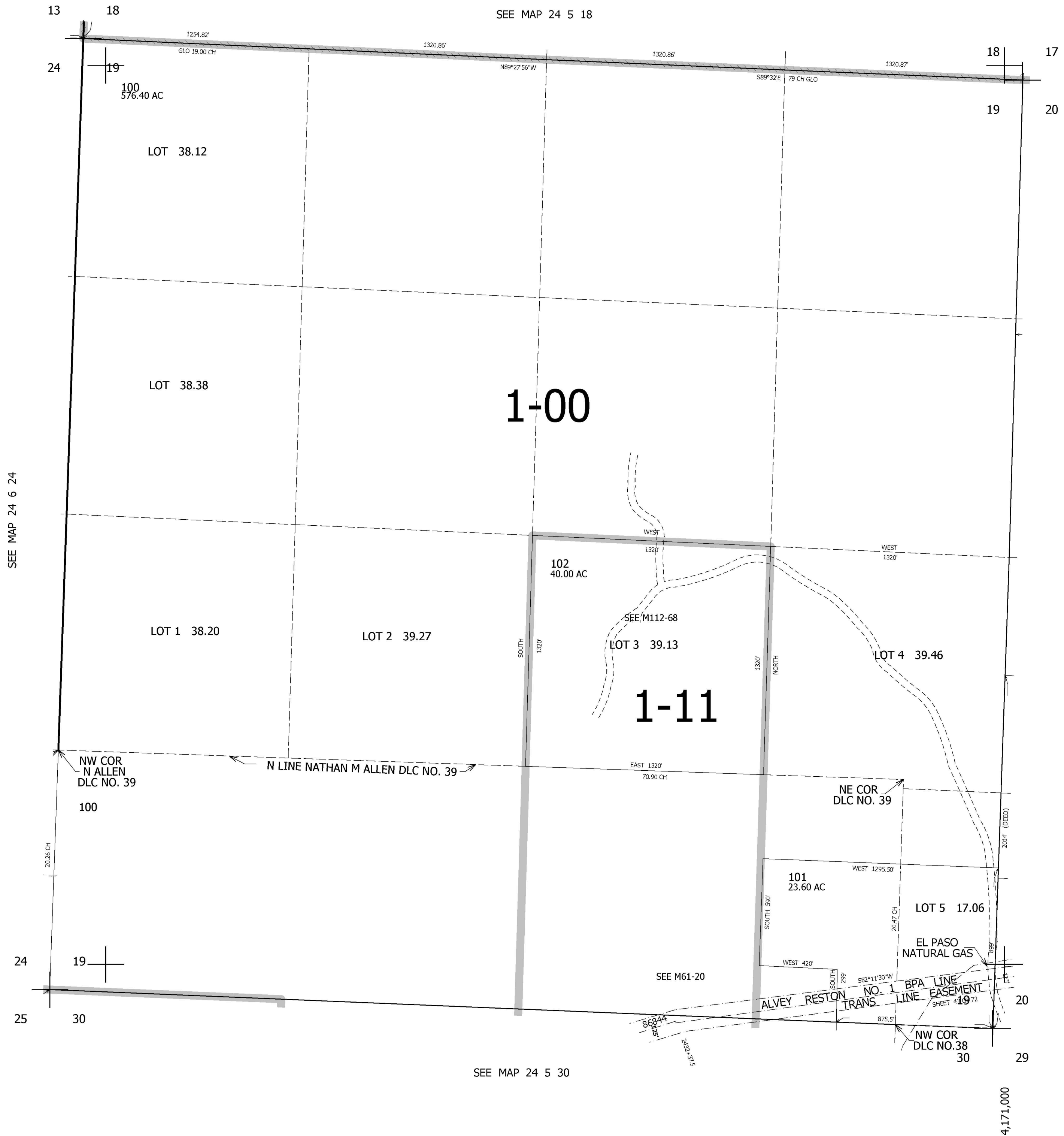


THIS MAP WAS PREPARED FOR ASSESSMENT PURPOSE ONLY.

SEC.19 T.24S. R.5W. W.M.  
DOUGLAS COUNTY  
1" = 400'

REVISED ON  
4-18-94

24 5 19



CANCELLED NOS  
102M1 100M1 101M1

SEE MAP 24 6 24

SEE MAP 24 5 20

SEE MAP 24 5 30

667,000

24 5 19

4,171,000