

THIS MAP WAS PREPARED FOR ASSESSMENT PURPOSE ONLY.

Upper Left:
123°20'55"W 43°29'28"N
4165479E 677781N ft

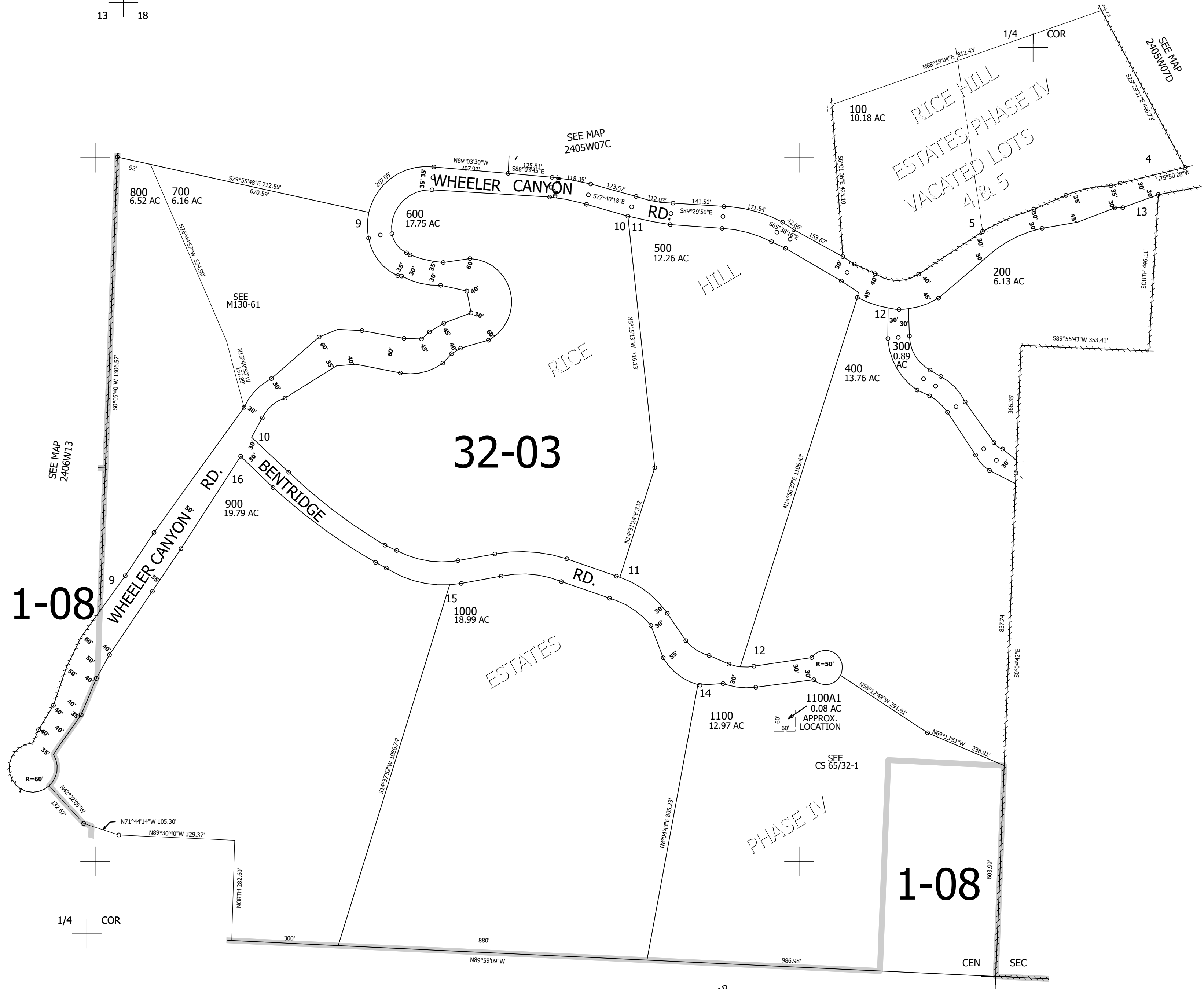
NW1/4 SEC.18 T.24S. R.05W. W.M.
DOUGLAS COUNTY
1" = 200'

Date Exported 2024-04-25

240518B

CANCELLED NOS:

12 7
13 18



1/4 COR

SEE MAP
2405W18

240518B

Lower Right:
123°20'11"W 43°28'55"N
4169404E 674303N ft