

THIS MAP WAS PREPARED FOR ASSESSMENT PURPOSE ONLY.

SE1/4 SEC.9 T.24S. R.5W. W.M. DOUGLAS COUNTY

REVISED ON 2-11-15

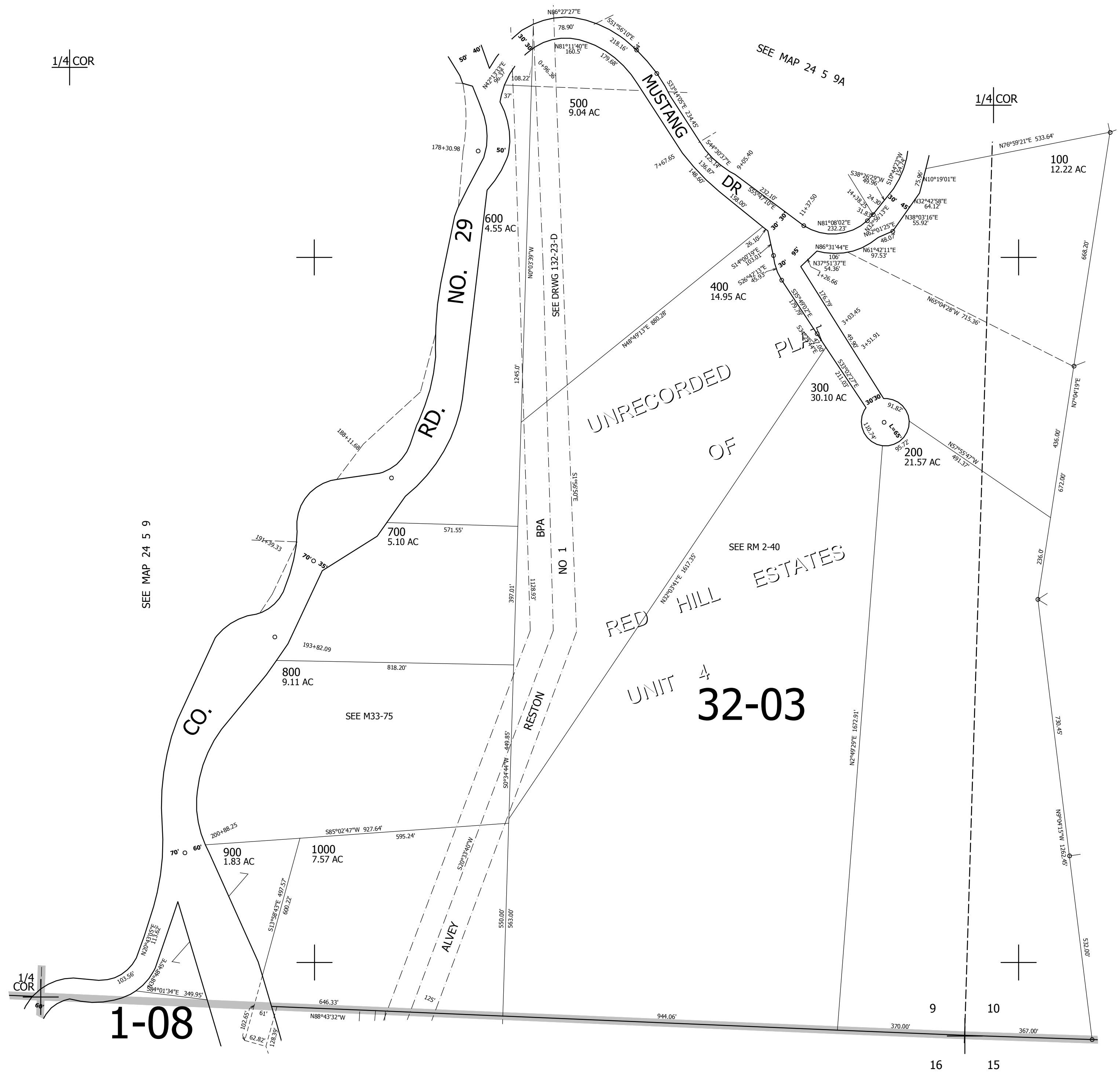
24 5 9D

1" = 200'

1/4 COR

1/4 COR

CANCELLED NOS 1000M1



SEE MAP 24 5 9

SEE MAP 24 5 9A

SEE DRWG 132-23-D

SEE RM 2-40

SEE MAP 24 5 10C

1/4 COR

1-08

SEE MAP 24 5 16

677,000

4,182,000

24 5 9D