

THIS MAP WAS PREPARED FOR ASSESSMENT PURPOSE ONLY.

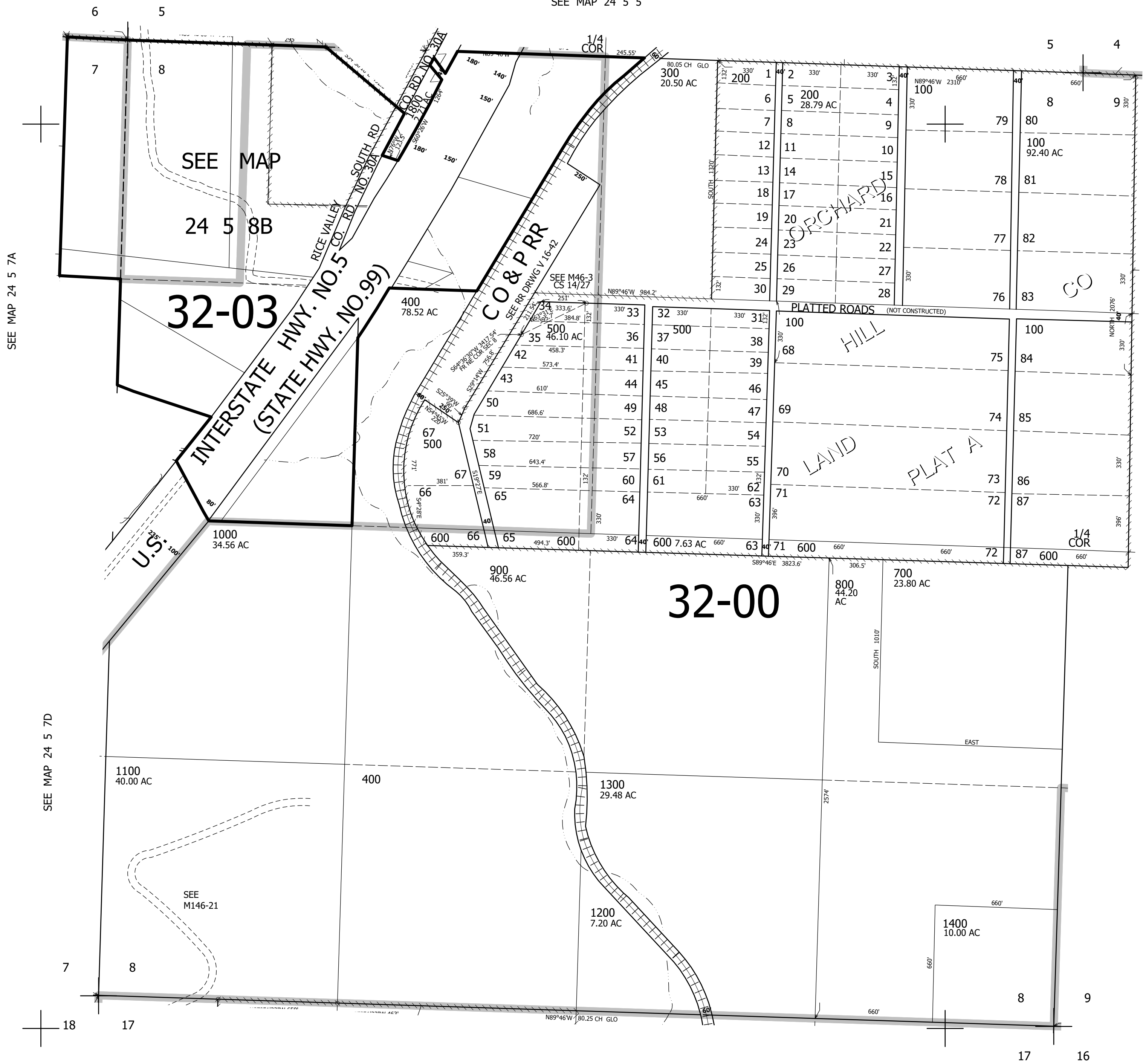
SEC.8 T.24S. R.5W. W.M.  
DOUGLAS COUNTY

1" = 400'

REVISED ON  
5-5-95

24 5 8  
& INDEX

SEE MAP 24 5 5



CANCELLED NOS  
900M1 800M1 1400M1

SEE MAP 24 5 7A

SEE MAP 24 5 7D

SEE MAP 24 5 9

SEE MAP 24 5 17

677,000

4,176,000

24 5 8  
& INDEX