

THIS MAP WAS PREPARED FOR ASSESSMENT PURPOSE ONLY.

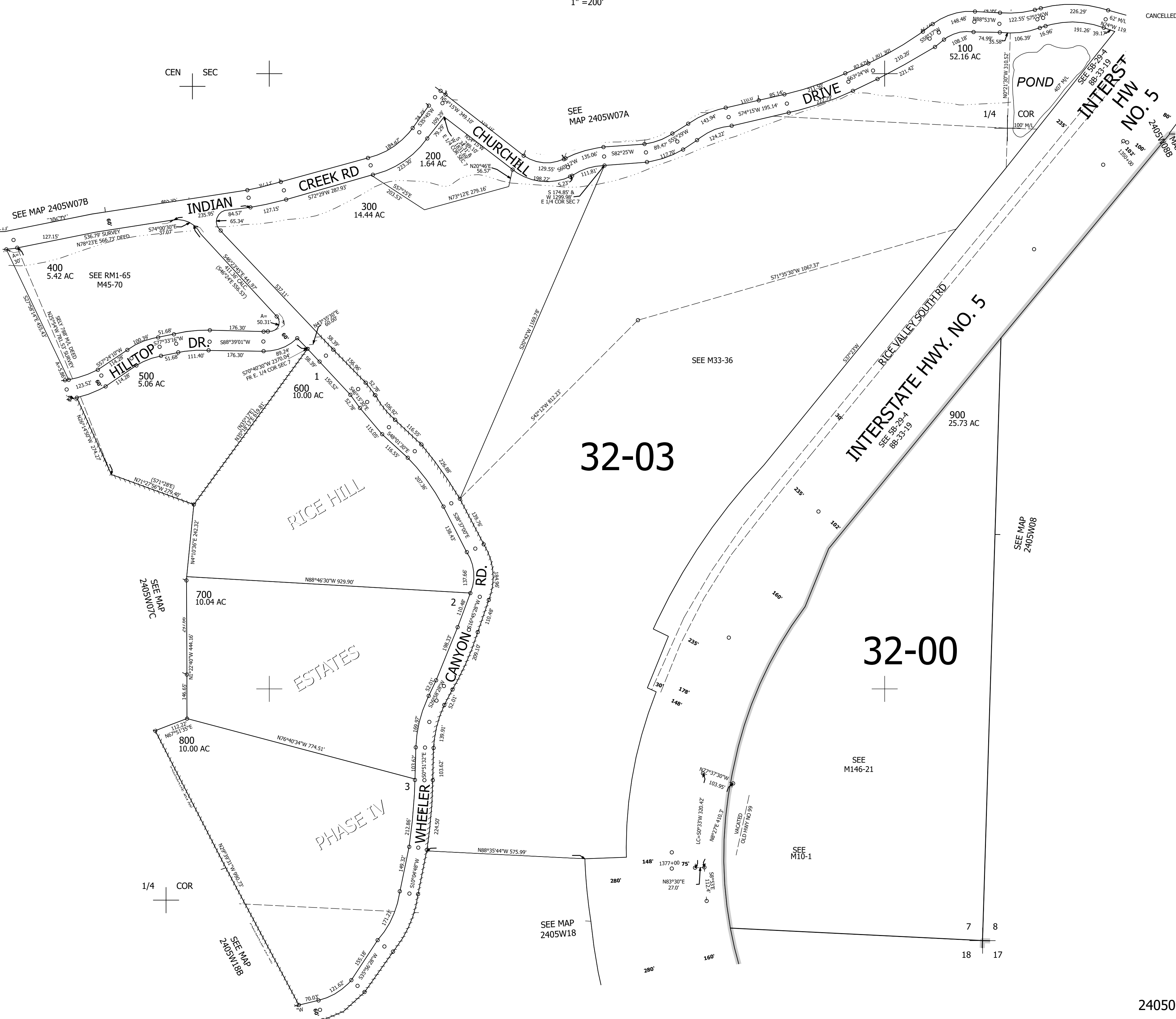
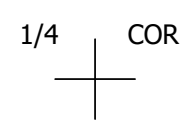
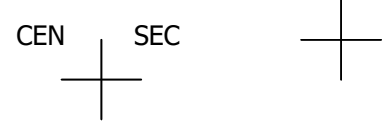
Upper Left:
123°20'21"W 43°29'54"N
4168075E 680303N ft

SE1/4 SEC.07 T.24S. R.05W. W.M.
DOUGLAS COUNTY
1" = 200'

Date Exported 2025-05-01

240507D

CANCELLED NOS:
101



32-03

32-00

Lower Right:
123°19'26"W 43°29'21"N
4172000E 676826N ft

240507D