

THIS MAP WAS PREPARED FOR ASSESSMENT PURPOSE ONLY.

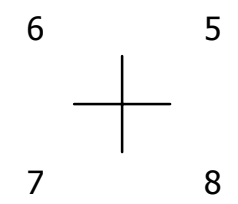
NE1/4 SEC.7 T.24S. R.5W. W.M. DOUGLAS COUNTY

1" = 200'

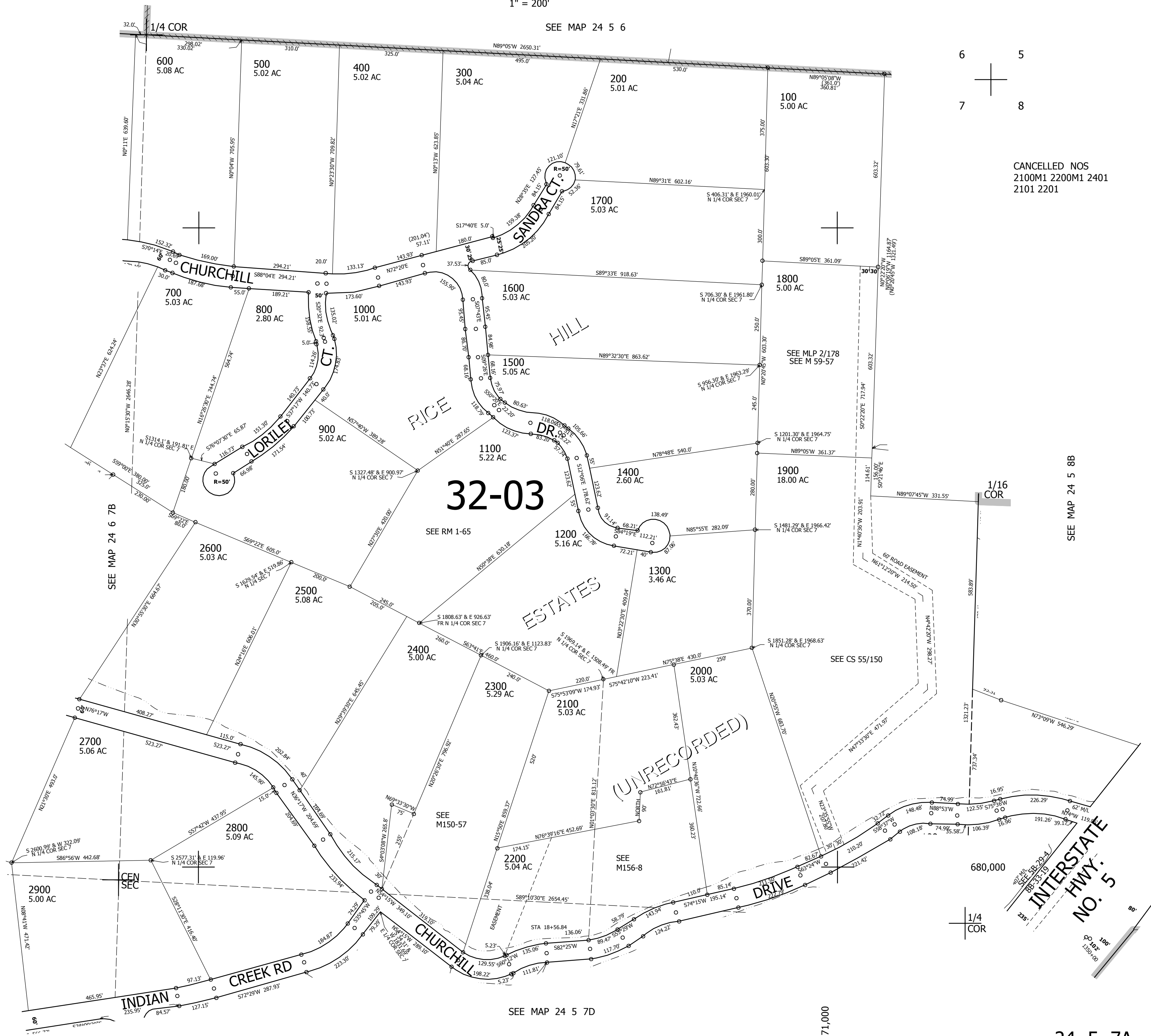
REVISED ON
6-27-08

24 5 7A

SEE MAP 24 5 6



CANCELLED NOS
2100M1 2200M1 2401
2101 2201



SEE MAP 24 6 7B

32-03

SEE RM 1-65

ESTATES

(UNRECORDED)

CHURCHILL

CREEK RD

INDIAN

DRIVE

INTERSTATE
HWY. NO. 5

1/4 COR

SEE MAP 24 5 8B

SEE MAP 24 5 7D

4,171,000

24 5 7A