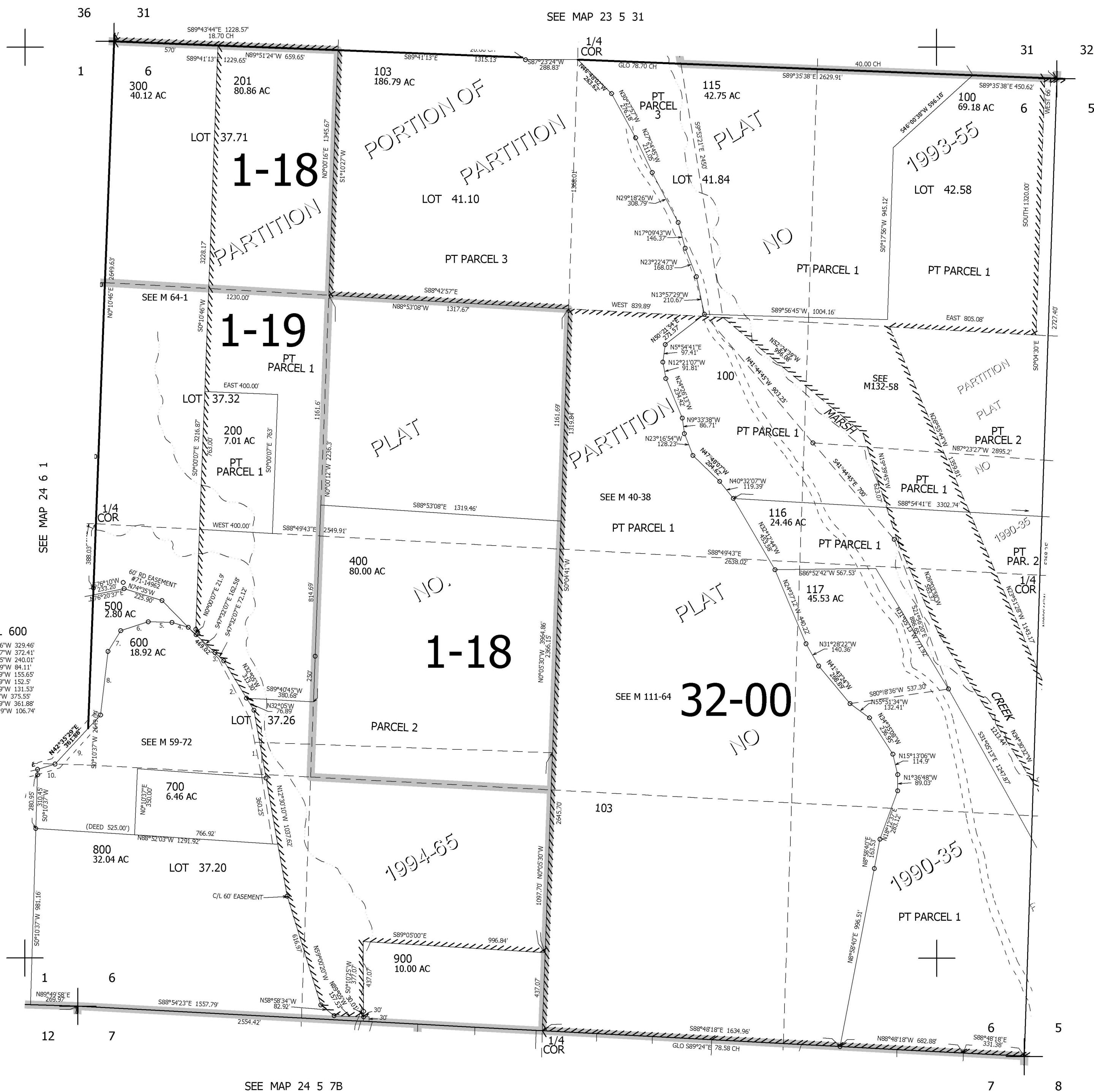


THIS MAP WAS PREPARED FOR ASSESSMENT PURPOSE ONLY.

SEC.6 T.24S. R.5W. W.M. DOUGLAS COUNTY

REVISED ON 3-1-05

1" = 400'



CANCELLED NOS
 401 402 403
 200M2 200M1 400M1
 300M1 104 105
 106 107 108
 109 110 111
 112 113 101
 102 114 118

SEE MAP 24 5 5

683,000

PARCEL 600

1. N13°49'06"W 329.46'
2. N32°16'27"W 372.41'
3. N15°42'13"W 240.01'
4. N54°01'49"W 84.11'
5. S87°18'49"W 155.65'
6. S65°57'49"W 152.5'
7. S25°13'49"W 131.53'
8. S42°24'34"W 375.55'
9. S42°35'29"W 961.88'
10. S69°40'49"W 106.74'

SEE MAP 24 5 7B

SEE MAP 24 5 7A

4,171,000