

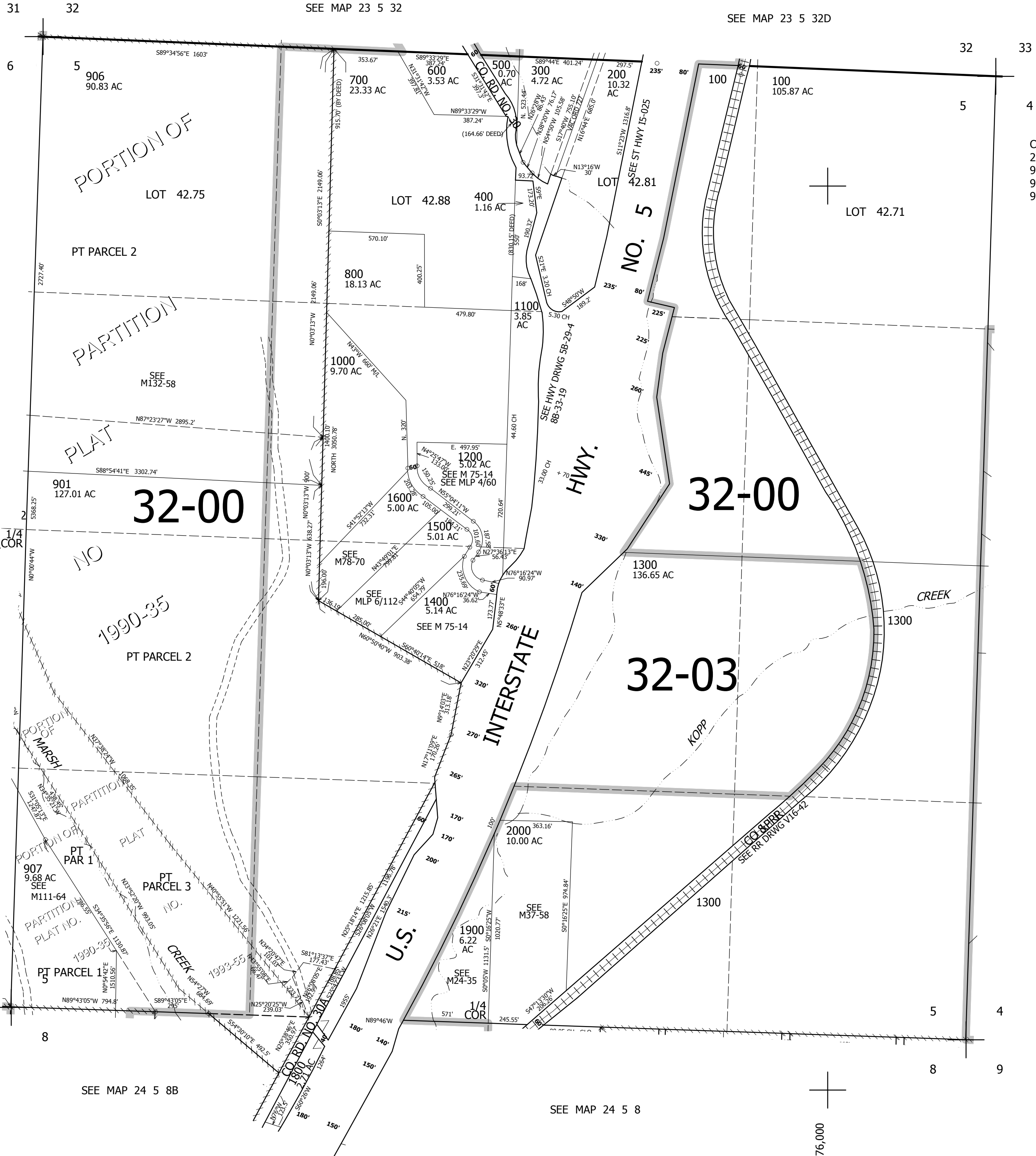
THIS MAP WAS PREPARED FOR ASSESSMENT PURPOSE ONLY.

SEC.5 T.24S. R.5W. W.M. DOUGLAS COUNTY

REVISED ON 3-1-05

24 5 5

1" = 400'



CANCELLED NOS
2100 2100M1 1701
903 904 1700
905 900 902
908

SEE MAP 24 5 6

SEE MAP 24 5 4

SEE MAP 24 5 8B

SEE MAP 24 5 8

682,000

4,176,000

24 5 5