

THIS MAP WAS PREPARED FOR ASSESSMENT PURPOSE ONLY.

SE1/4 SEC.4 T.24S. R.5W. W.M. DOUGLAS COUNTY

REVISED ON 1-2-14

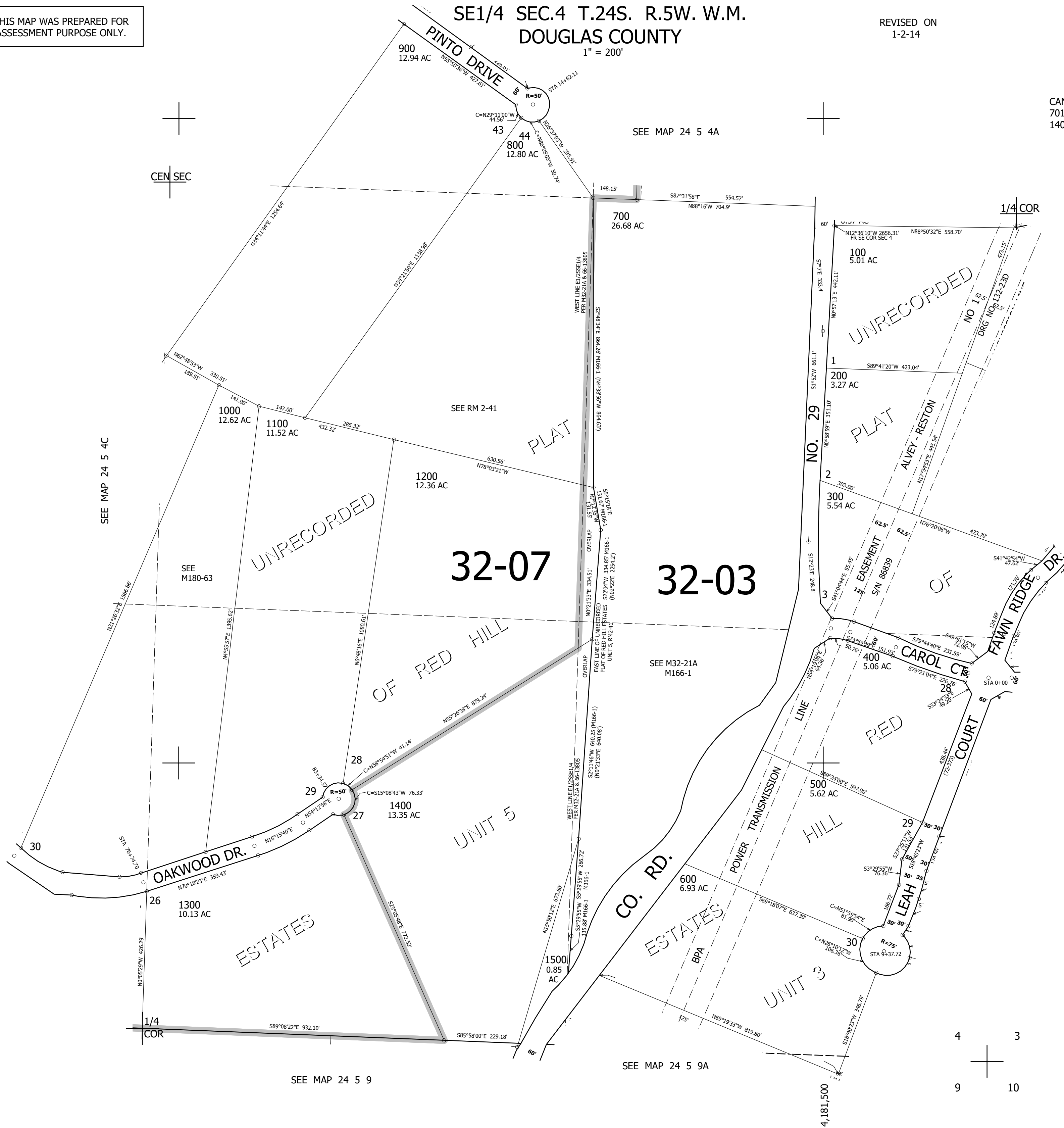
24 5 4D

1" = 200'

CANCELLED NOS 701 801 2101 1401 1501

CEN SEC

SEE MAP 24 5 4A



SEE MAP 24 5 4C

SEE M180-63

32-07

32-03

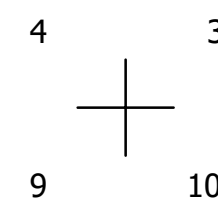
SEE M32-21A M166-1

SEE MAP 24 5 3C

683,000

SEE MAP 24 5 9A

SEE MAP 24 5 9



24 5 4D