

THIS MAP WAS PREPARED FOR ASSESSMENT PURPOSE ONLY.

SW1/4 SEC.4 T.24S. R.5W. W.M.  
DOUGLAS COUNTY

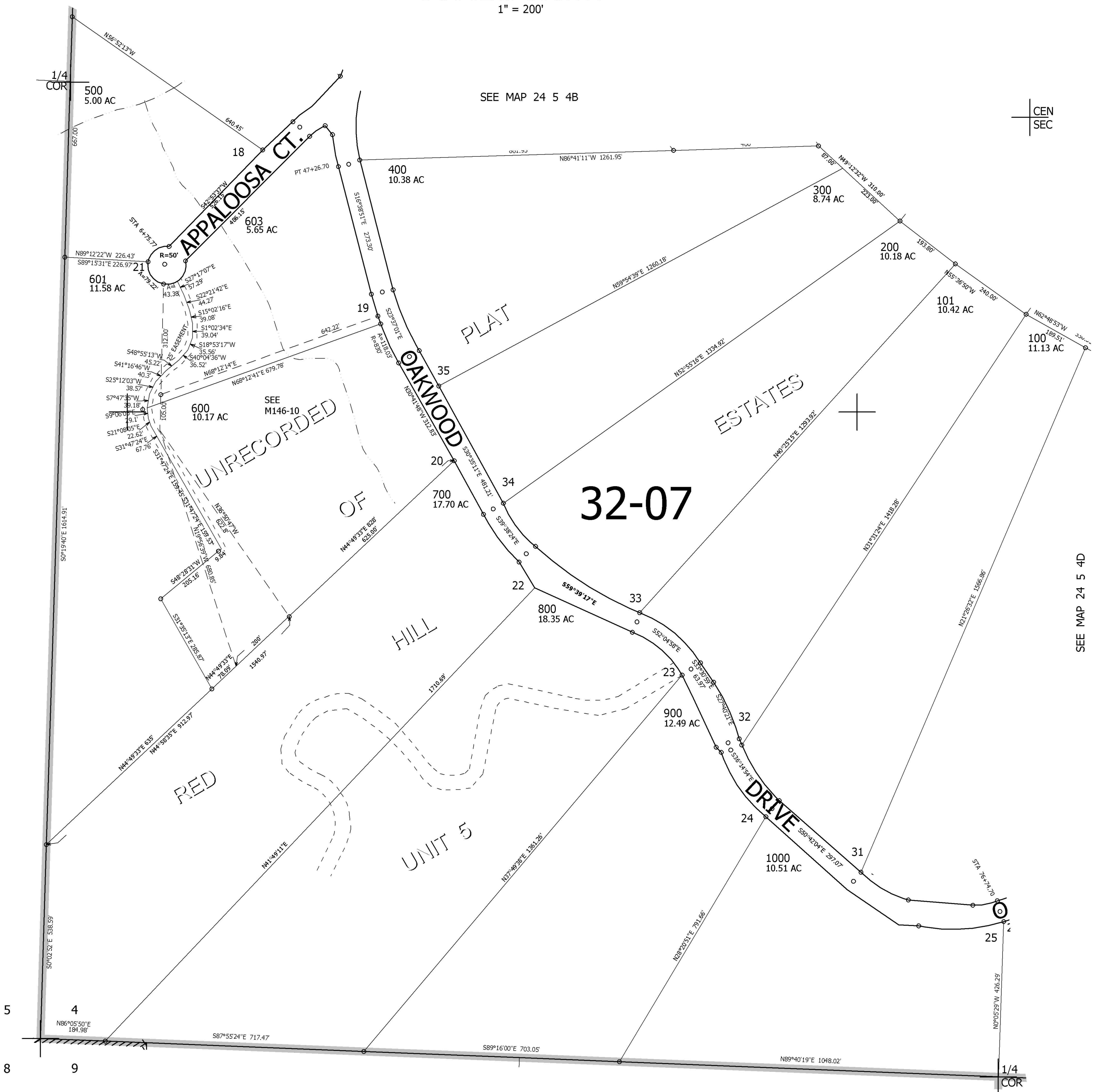
1" = 200'

REVISED ON  
2-2-05

24 5 4C

SEE MAP 24 5 5

SEE MAP 24 5 4D



SEE MAP 24 5 4B

CEN  
SEC

CANCELLED NOS  
602 604 605  
606

SEE MAP 24 5 9

4,179,000

682,000

24 5 4C