

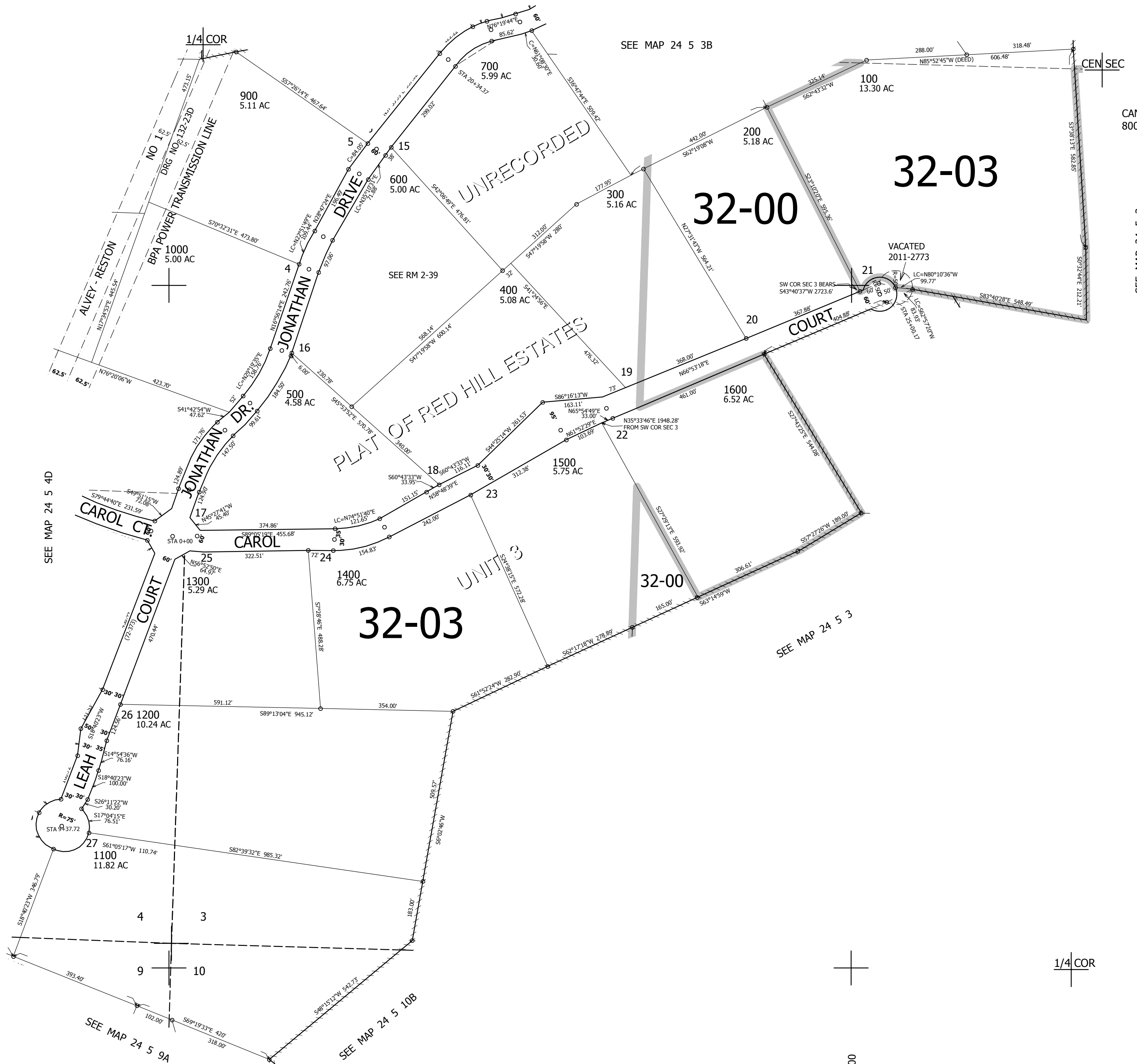
THIS MAP WAS PREPARED FOR ASSESSMENT PURPOSE ONLY.

SW1/4 SEC.3 T.24S. R.5W. W.M. DOUGLAS COUNTY

1" = 200'

REVISED ON 3-3-14

24 5 3C



SEE MAP 24 5 3B

CANCELLED NOS 800

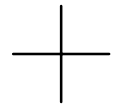
SEE MAP 24 5 3

SEE MAP 24 5 4D

SEE MAP 24 5 3

SEE MAP 24 5 9A

SEE MAP 24 5 10B



1/4 COR

682,000

4,184,000

24 5 3C