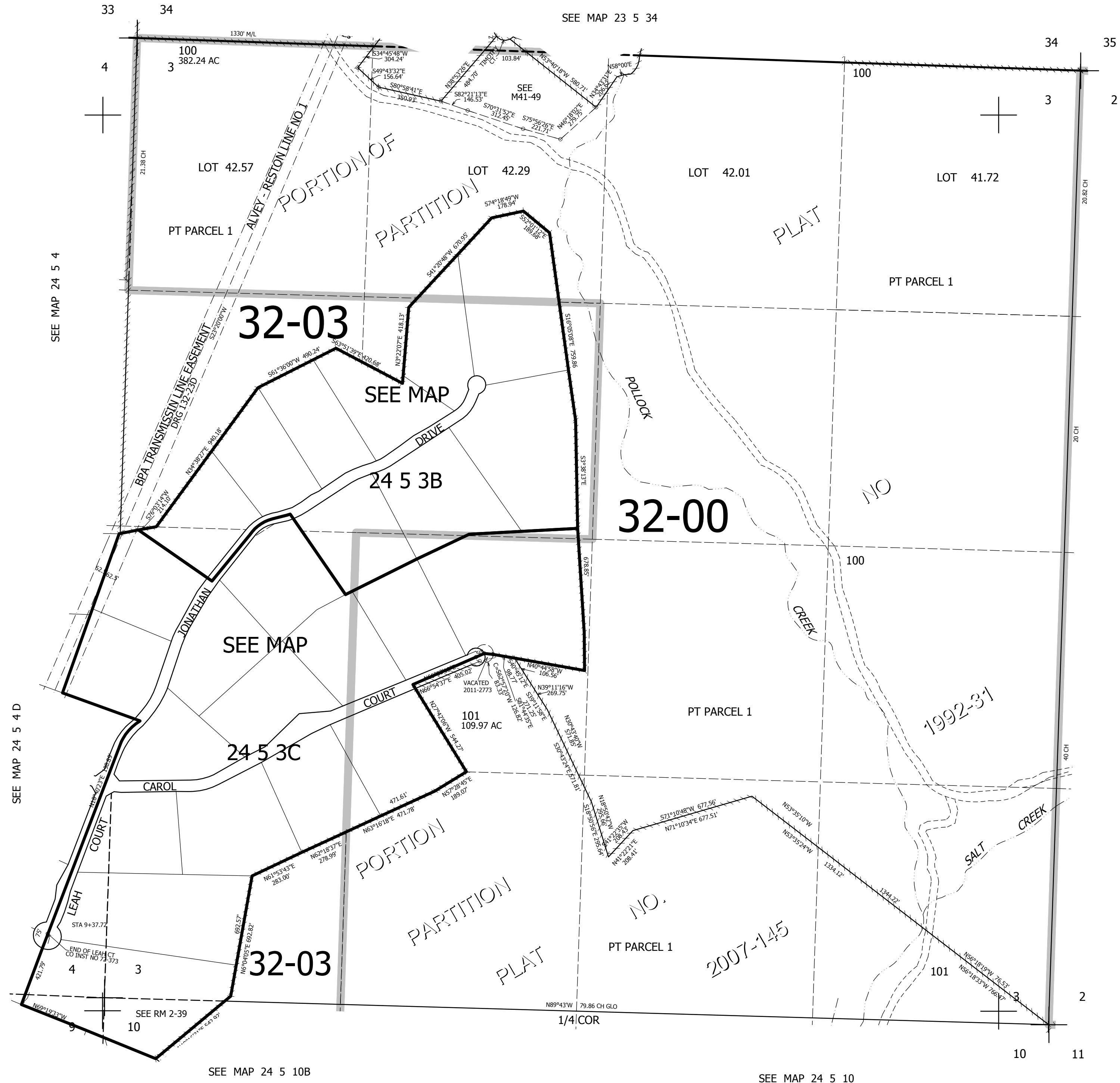


THIS MAP WAS PREPARED FOR ASSESSMENT PURPOSE ONLY.

SEC.3 T.24S. R.5W. W.M.
DOUGLAS COUNTY
1" = 400'

REVISED ON
3-9-11

24 5 3
& INDEX



SEE MAP 24 5 4

SEE MAP 24 5 4 D

SEE MAP 24 5 10B

SEE MAP 24 5 10

CANCELLED NOS
200 201 300

SEE MAP 24 5 2

682,000

4,187,000

24 5 3
& INDEX