

THIS MAP WAS PREPARED FOR ASSESSMENT PURPOSE ONLY.

SEC.1 T.24S. R.5W. W.M.  
DOUGLAS COUNTY

24 5 1

REVISED ON  
10-28-19

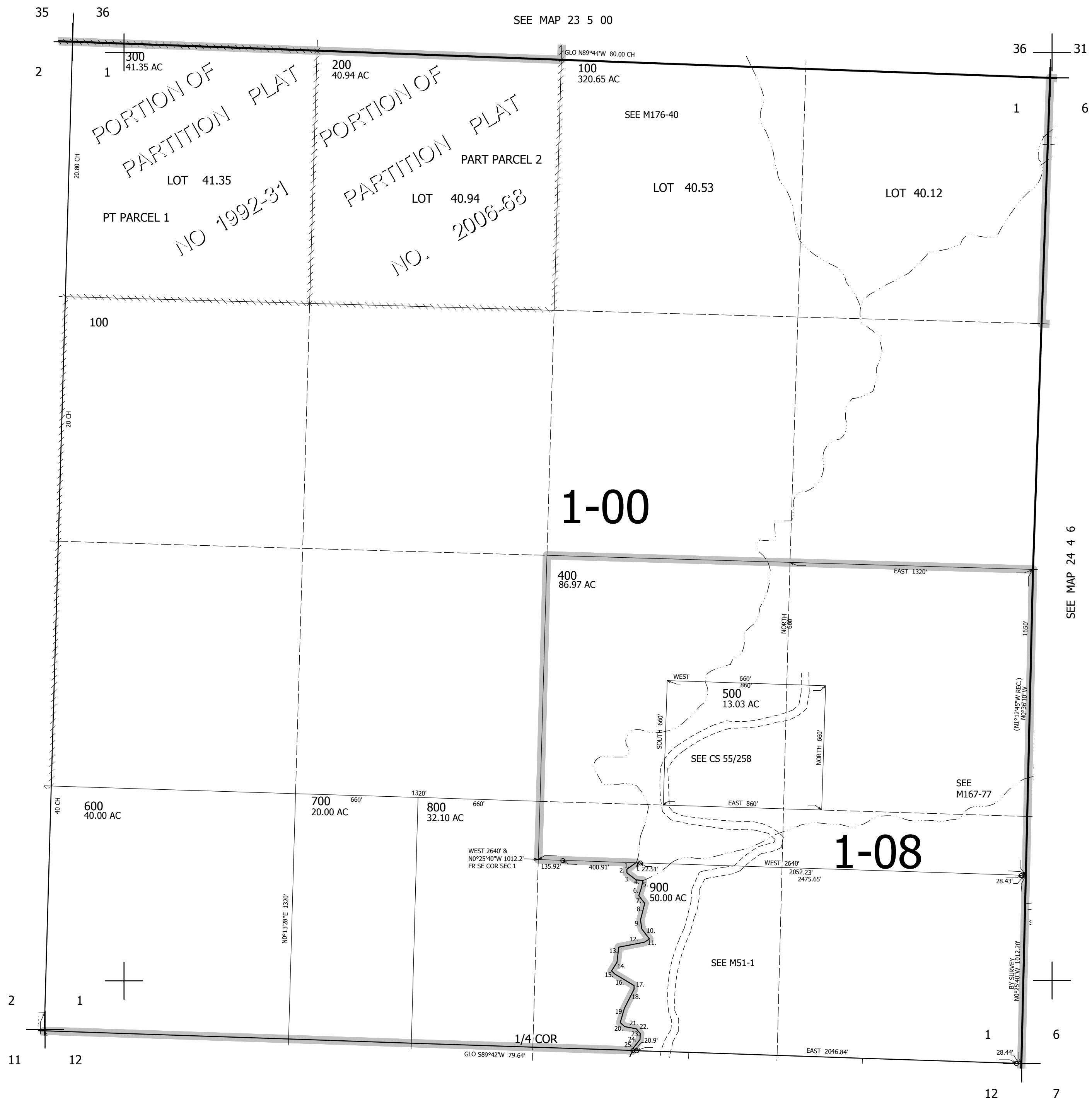
1" = 400'

SEE MAP 23 5 00

CANCELLED NOS

SEE MAP 24 5 2

SEE MAP 24 4 6



PARCEL 900

- 1. S53°16'W 60.66'
- 2. S0°34'E 21'
- 3. S55°25'E 61'
- 4. S85°03'E 38'
- 5. S11°20'W 42'
- 6. S15°16'W 42'
- 7. S38°26'E 52'
- 8. S12°03'W 92'
- 9. S9°42'E 48'
- 10. S38°24'E 69'
- 11. S55°15'W 32'
- 12. S77°37'W 141'
- 13. S3°57'W 82'
- 14. S30°01'W 56'
- 15. S49°42'E 26'
- 16. S61°07'E 118'
- 17. S2°35'E 20'
- 18. S24°40'W 115'
- 19. S14°13'W 80'
- 20. S49°38'E 32'
- 21. S80°44'E 63'
- 22. S42°11'E 53'
- 23. S0°02'W 33'
- 24. S36°32'W 56'
- 25. S14°38'W 15.76'

682,000

SEE MAP 24 5 12

4,198,000

24 5 1