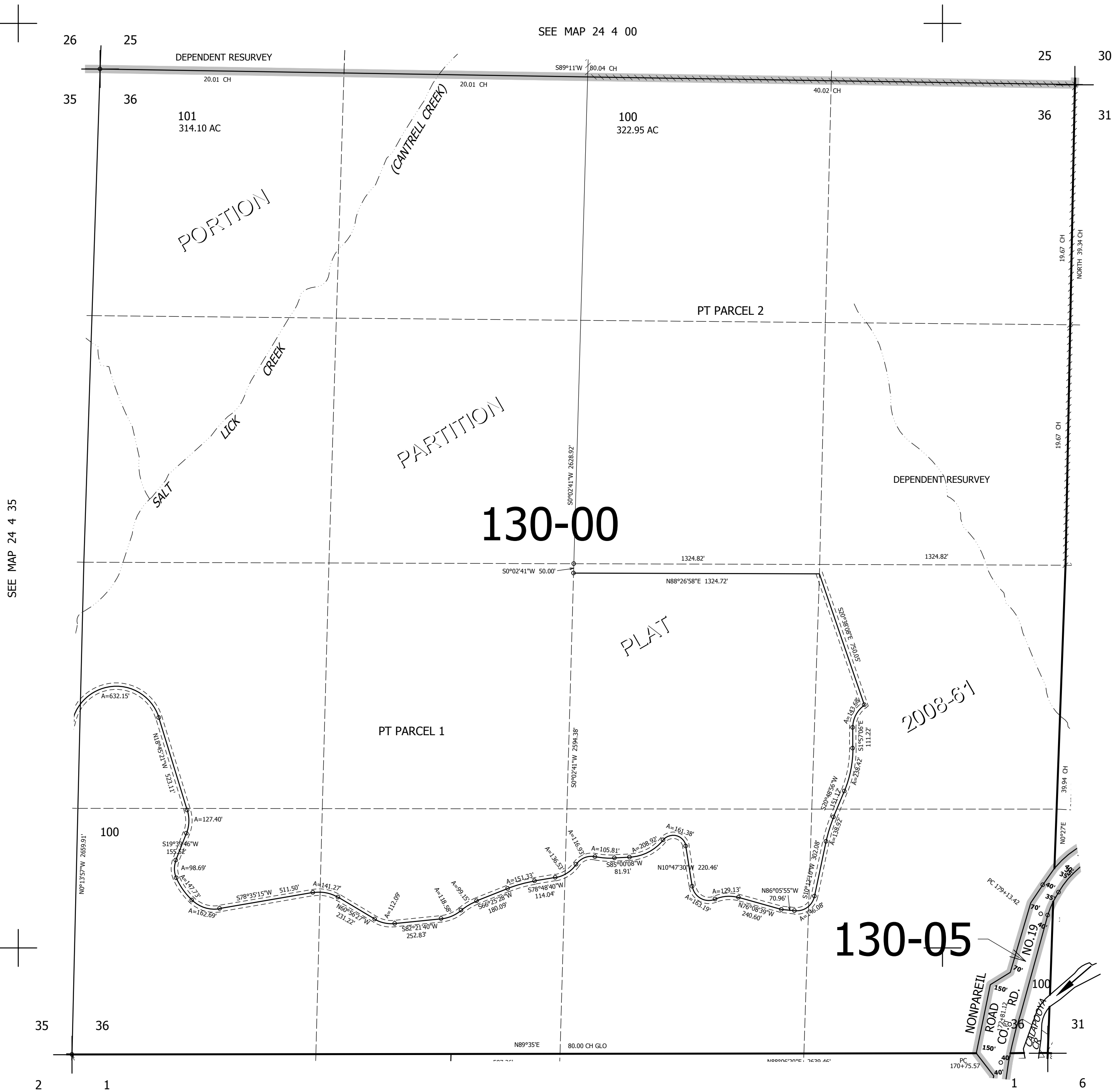


THIS MAP WAS PREPARED FOR ASSESSMENT PURPOSE ONLY.

SEC.36 T.24S. R.4W. W.M.
DOUGLAS COUNTY
1" = 400'

REVISED ON
12-2-08

24 4 36



SEE MAP 24 4 35

SEE MAP 24 4 00

CANCELLED NOS

SEE MAP 24 3 31

130-00

2008-6-1

130-05

655,000

SEE MAP 25 4 1

4,228,000

24 4 36