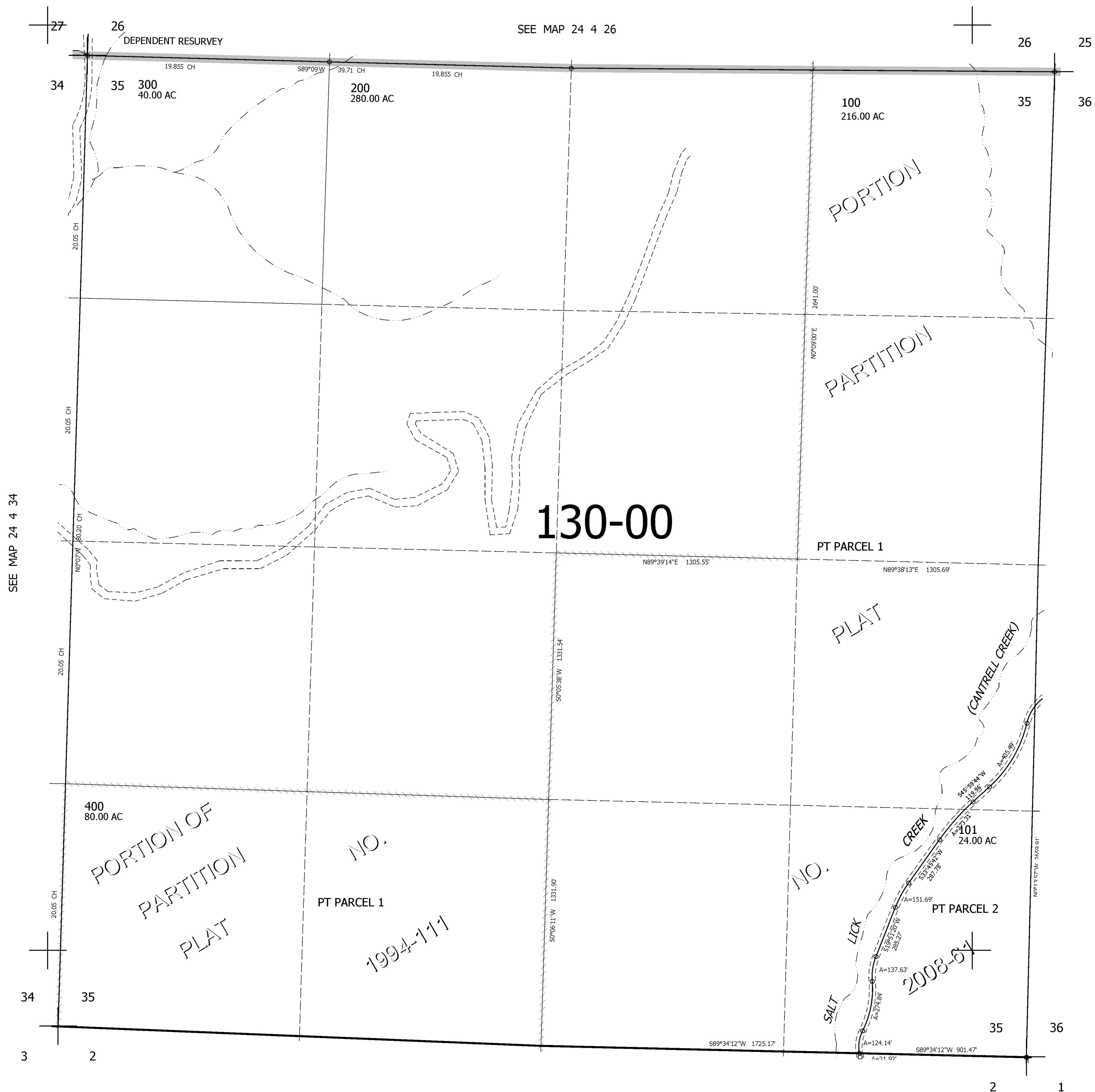


THIS MAP WAS PREPARED FOR ASSESSMENT PURPOSE ONLY.

SEC.35 T.24S. R.4W. W.M.
DOUGLAS COUNTY
1" = 400'

REVISED ON
12-2-08

24 4 35



CANCELLED NOS
500

SEE MAP 24 4 34

SEE MAP 24 4 36

SEE MAP 25 4 2

655,000

4,223,000

24 4 35