

THIS MAP WAS PREPARED FOR ASSESSMENT PURPOSE ONLY.

SEC.32 T.24S. R.4W. W.M. DOUGLAS COUNTY

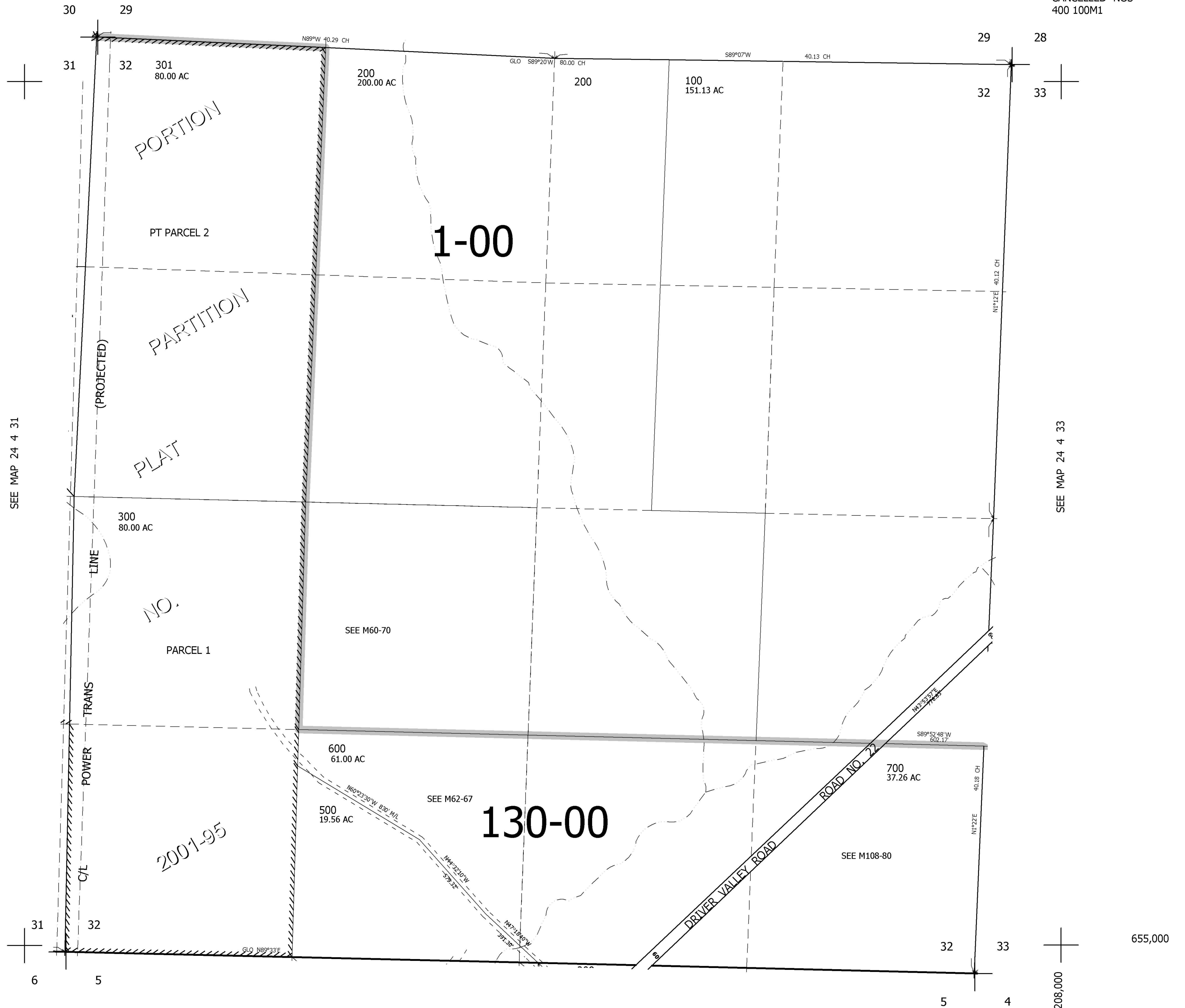
REVISED ON
3-17-06

24 4 32

1" = 400'

SEE MAP 24 4 29

CANCELLED NOS
400 100M1



SEE MAP 24 4 31

SEE MAP 24 4 33

SEE MAP 25 4 5

655,000
4,208,000

24 4 32