

THIS MAP WAS PREPARED FOR ASSESSMENT PURPOSE ONLY.

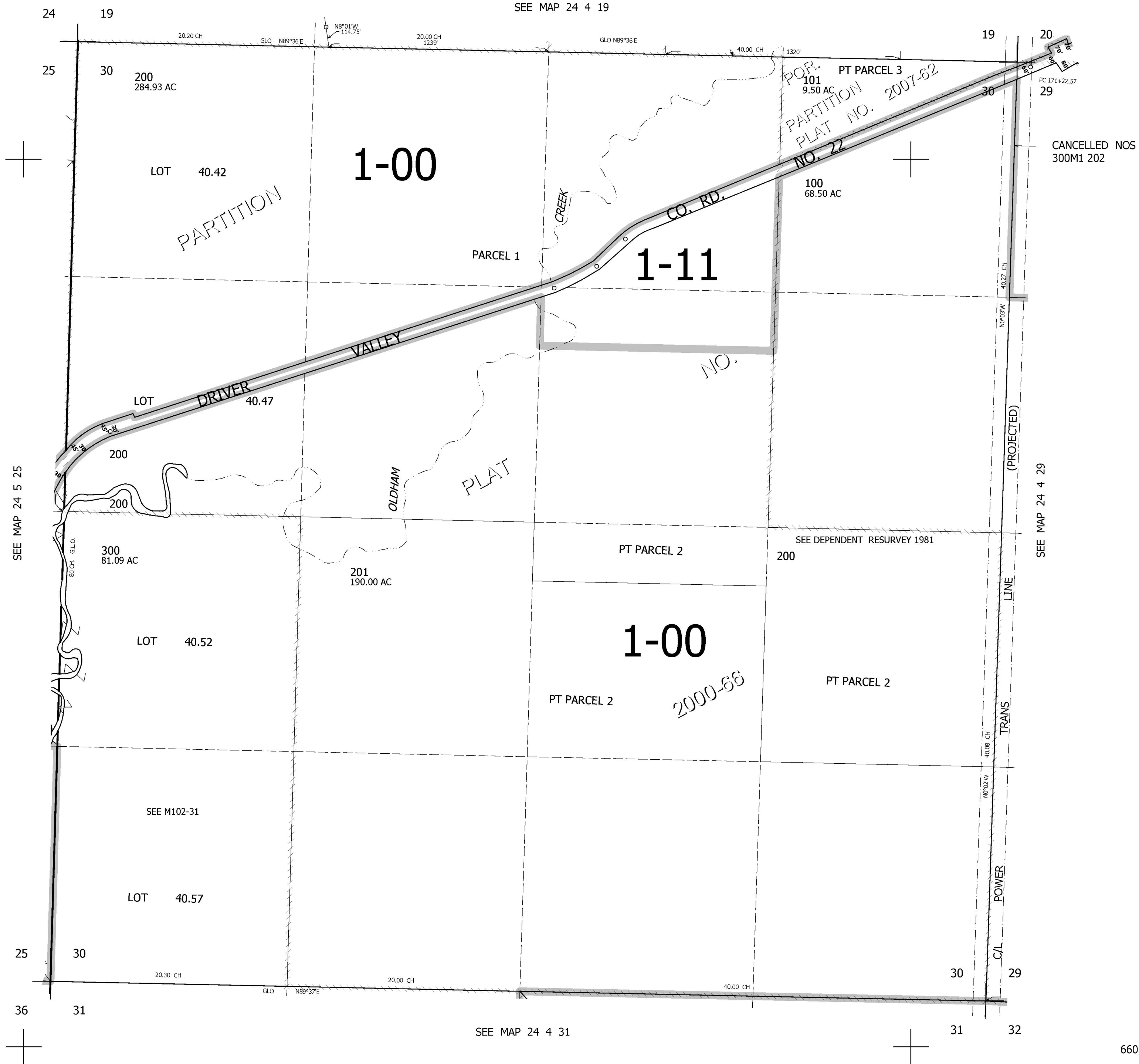
# SEC.30 T.24S. R.4W. W.M. DOUGLAS COUNTY

24 4 30

REVISED ON 7-3-07

1" = 400'

SEE MAP 24 4 19



CANCELLED NOS 300M1 202

SEE MAP 24 5 25

SEE MAP 24 4 29

SEE MAP 24 4 31

4,202,000

660,000

24 4 30