

THIS MAP WAS PREPARED FOR ASSESSMENT PURPOSE ONLY.

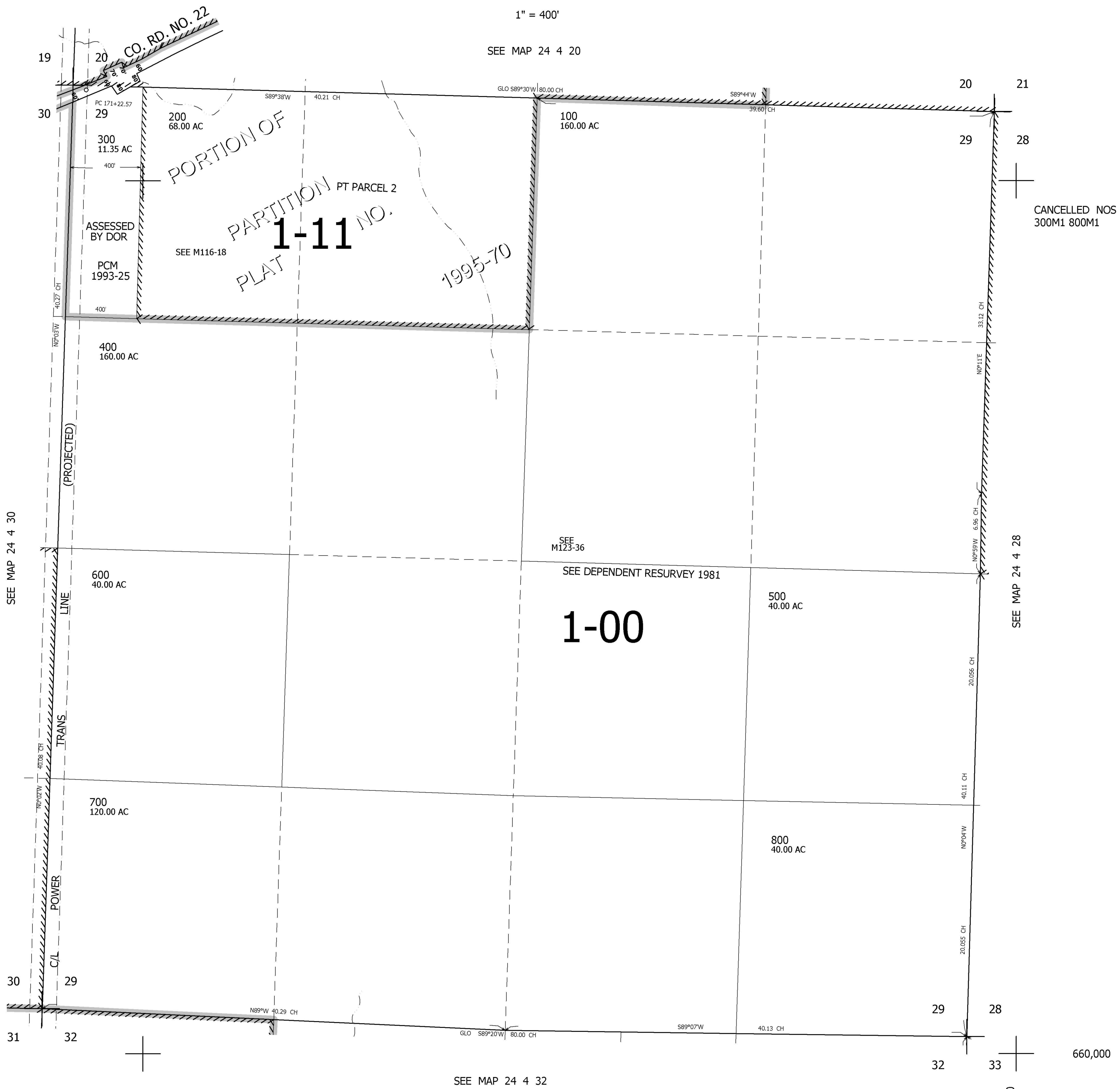
SEC.29 T.24S. R.4W. W.M.  
DOUGLAS COUNTY

REVISED ON  
5-5-05

24 4 29

1" = 400'

SEE MAP 24 4 20



CANCELLED NOS  
300M1 800M1

SEE MAP 24 4 30

SEE MAP 24 4 28

SEE MAP 24 4 32

660,000

4,208,000

24 4 29