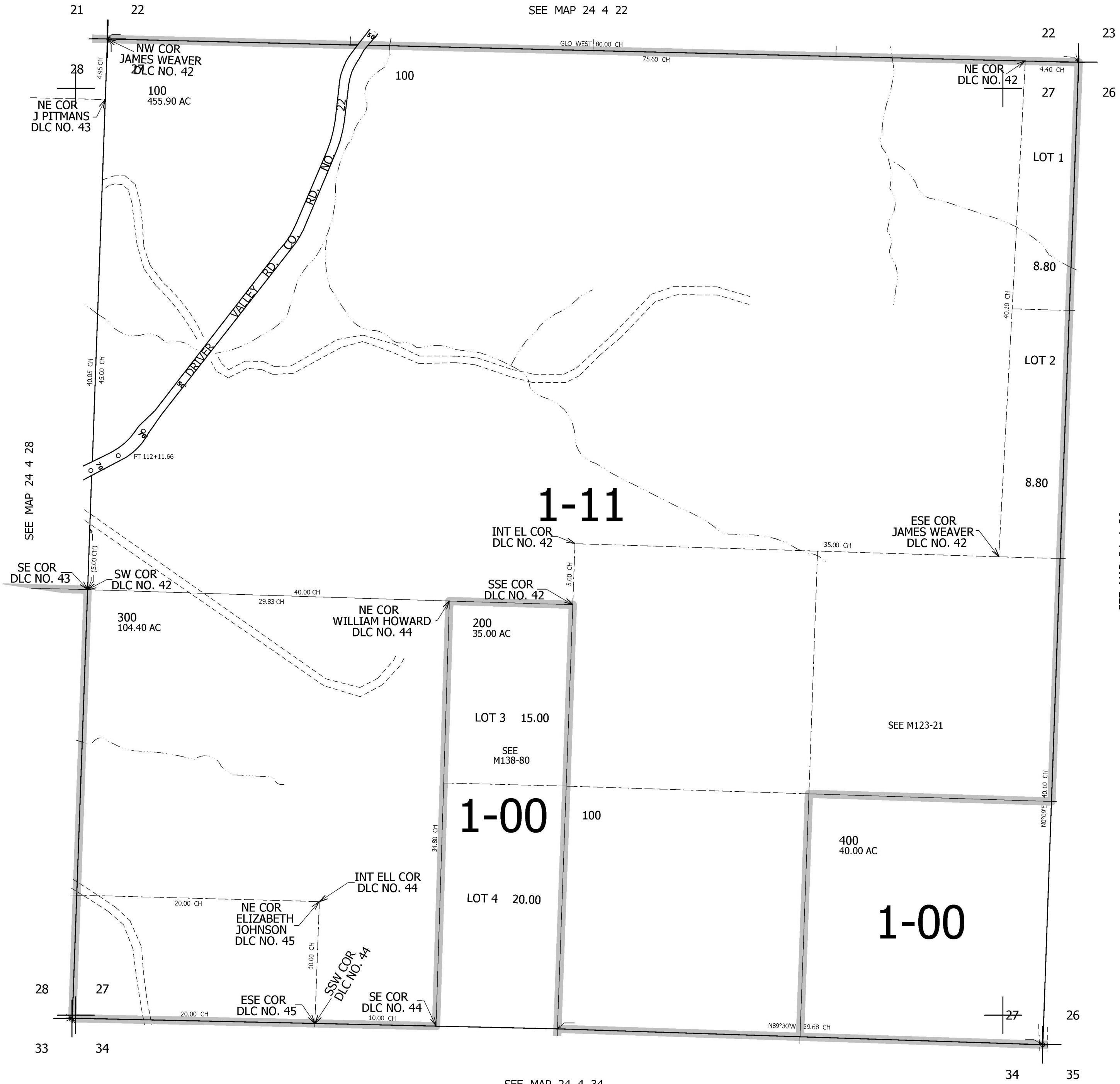


THIS MAP WAS PREPARED FOR ASSESSMENT PURPOSE ONLY.

SEC.27 T.24S. R.4W. W.M.  
DOUGLAS COUNTY  
1" = 400'

REVISED ON  
2-26-08

24 4 27



CANCELLED NOS  
400M1 400M2

SEE MAP 24 4 26

660,000

SEE MAP 24 4 34

4,218,000

24 4 27