

THIS MAP WAS PREPARED FOR ASSESSMENT PURPOSE ONLY.

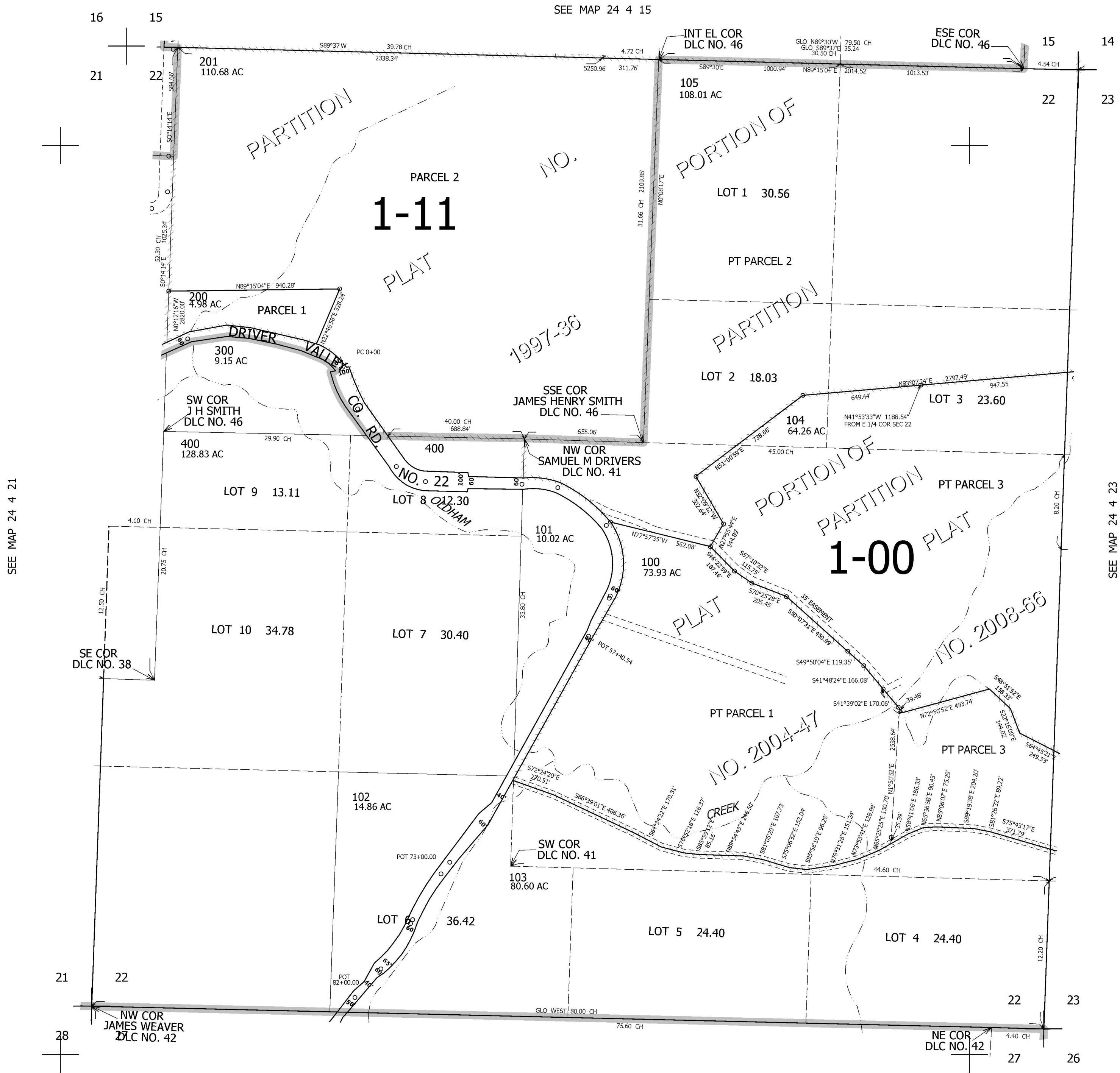
SEC.22 T.24S. R.4W. W.M. DOUGLAS COUNTY

REVISED ON 11-24-08

24 4 22

1" = 400'

CANCELLED NOS 106 107



SEE MAP 24 4 21

SEE MAP 24 4 23

SEE MAP 24 4 27

4,218,000

24 4 22

665,000