

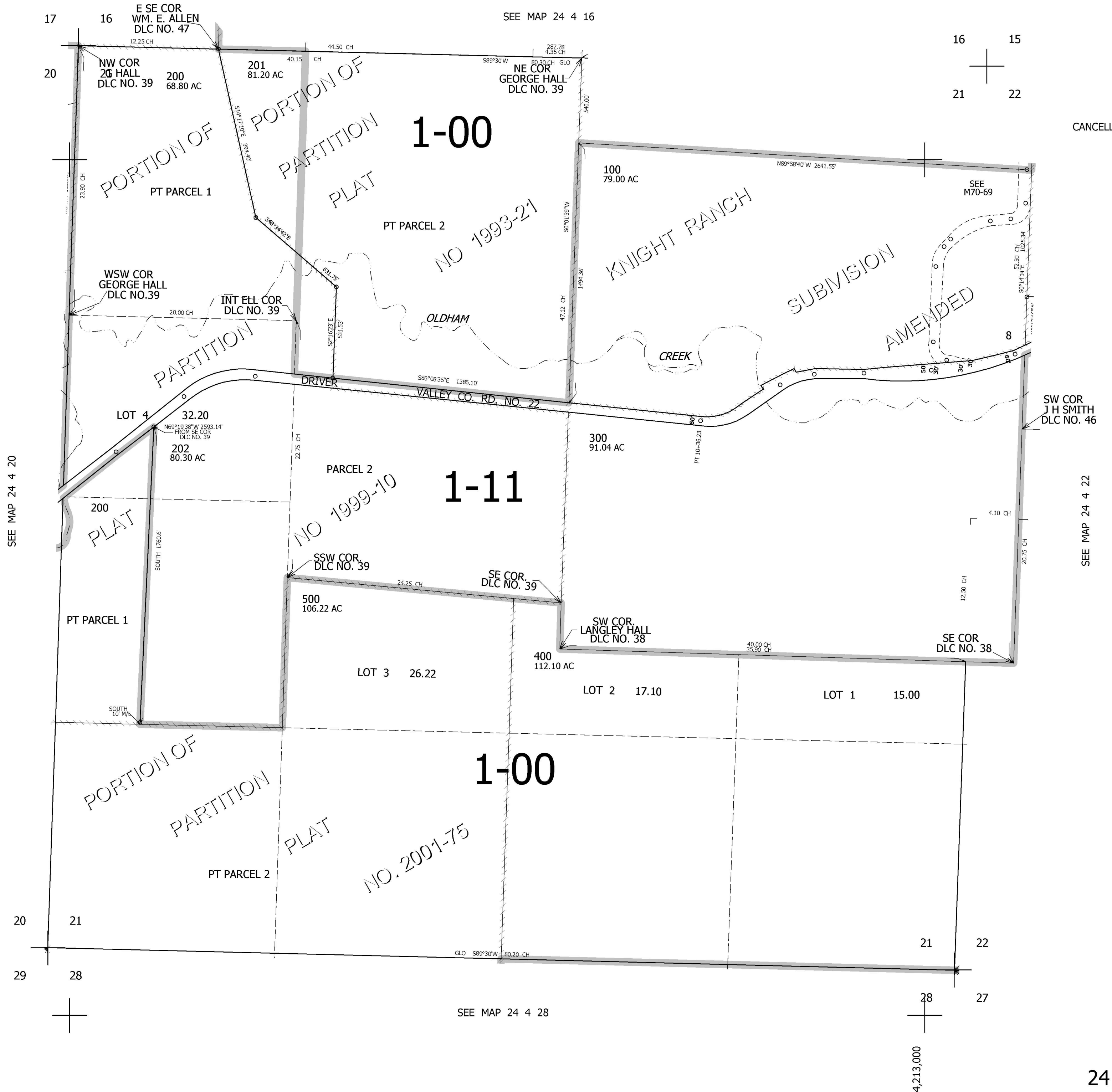
THIS MAP WAS PREPARED FOR ASSESSMENT PURPOSE ONLY.

SEC.21 T.24S. R.4W. W.M. DOUGLAS COUNTY

1" = 400'

REVISED ON 3-4-10

24 4 21



CANCELLED NOS

SEE MAP 24 4 22

665,000

24 4 21