

THIS MAP WAS PREPARED FOR ASSESSMENT PURPOSE ONLY.

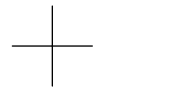
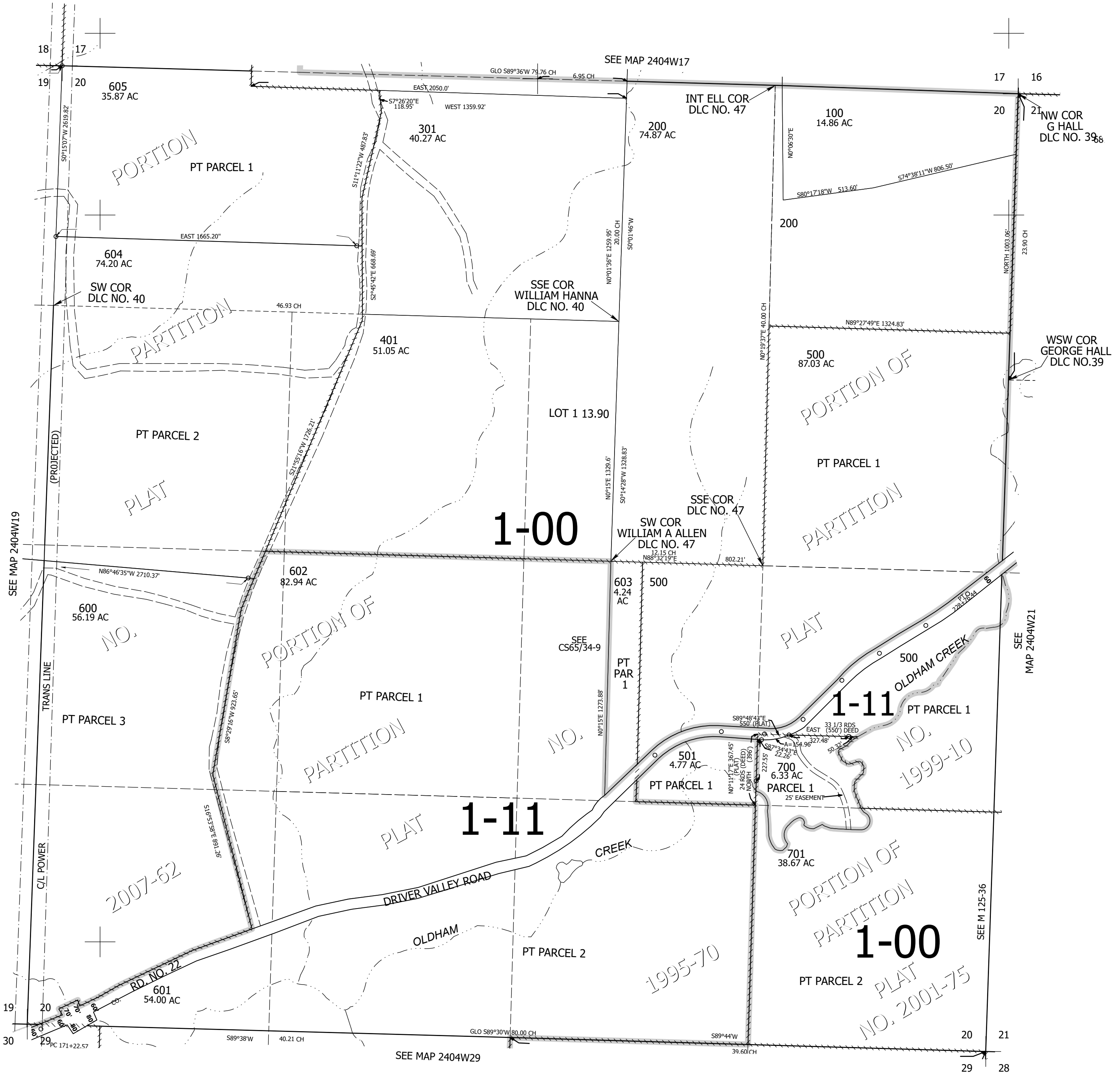
Upper Left:
123°12'42"W 43°28'40"N
4201629E 671741N ft

SEC.20 T.24S. R.04W. W.M.
DOUGLAS COUNTY
1" = 400'

Date Exported 2025-02-11

240420

CANCELLED NOS:
400 400M1 300M1 301M1 401M1
300



240420

Lower Right:
123°10'53"W 43°27'34"N
4209479E 664786N ft