

THIS MAP WAS PREPARED FOR ASSESSMENT PURPOSE ONLY.

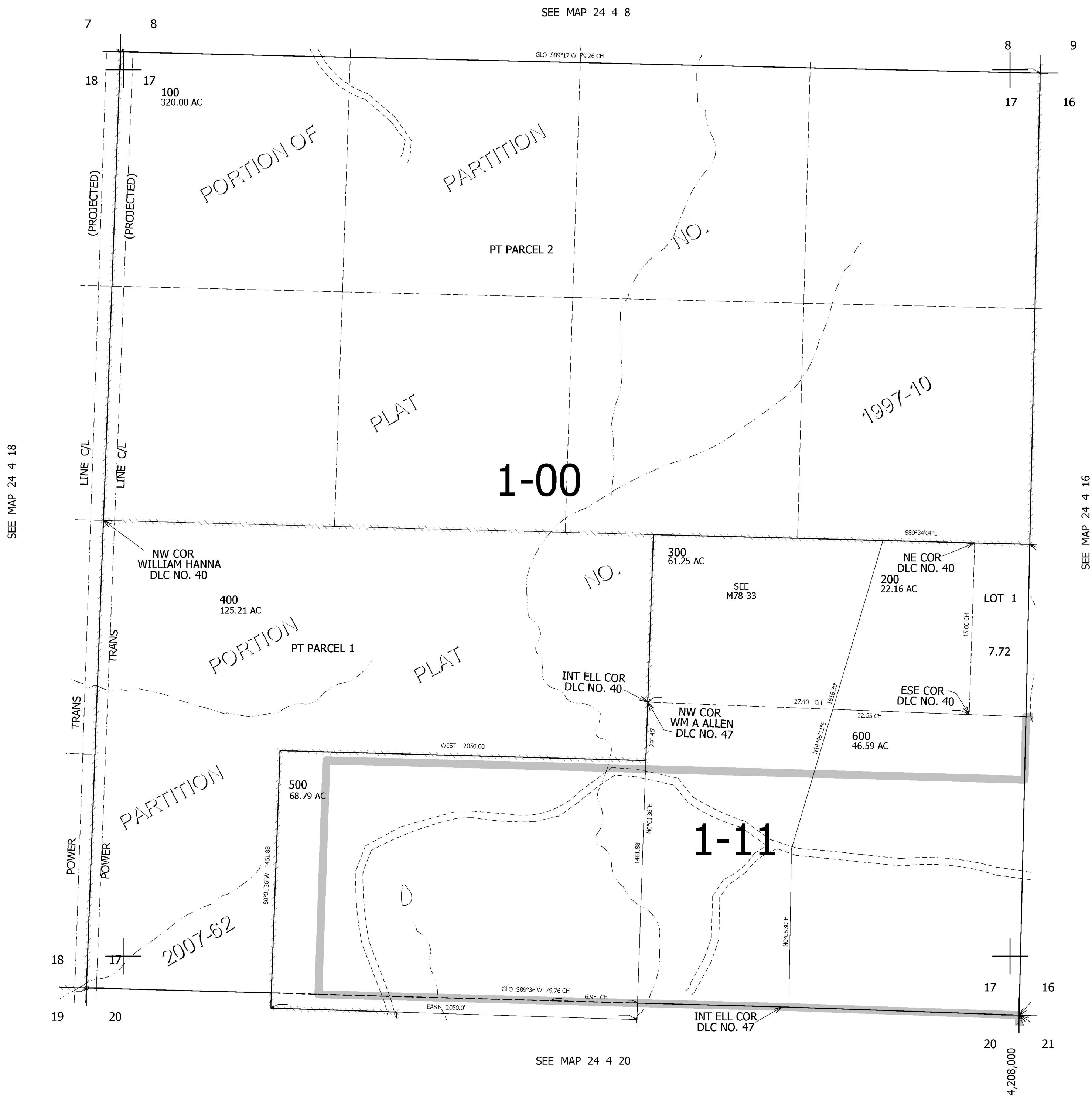
# SEC.17 T.24S. R.4W. W.M. DOUGLAS COUNTY

REVISED ON  
7-3-07

24 4 17

1" = 400'

CANCELLED NOS  
400M1 500M1 500M2



SEE MAP 24 4 18

SEE MAP 24 4 16

671,000

SEE MAP 24 4 20

24 4 17

4,208,000