

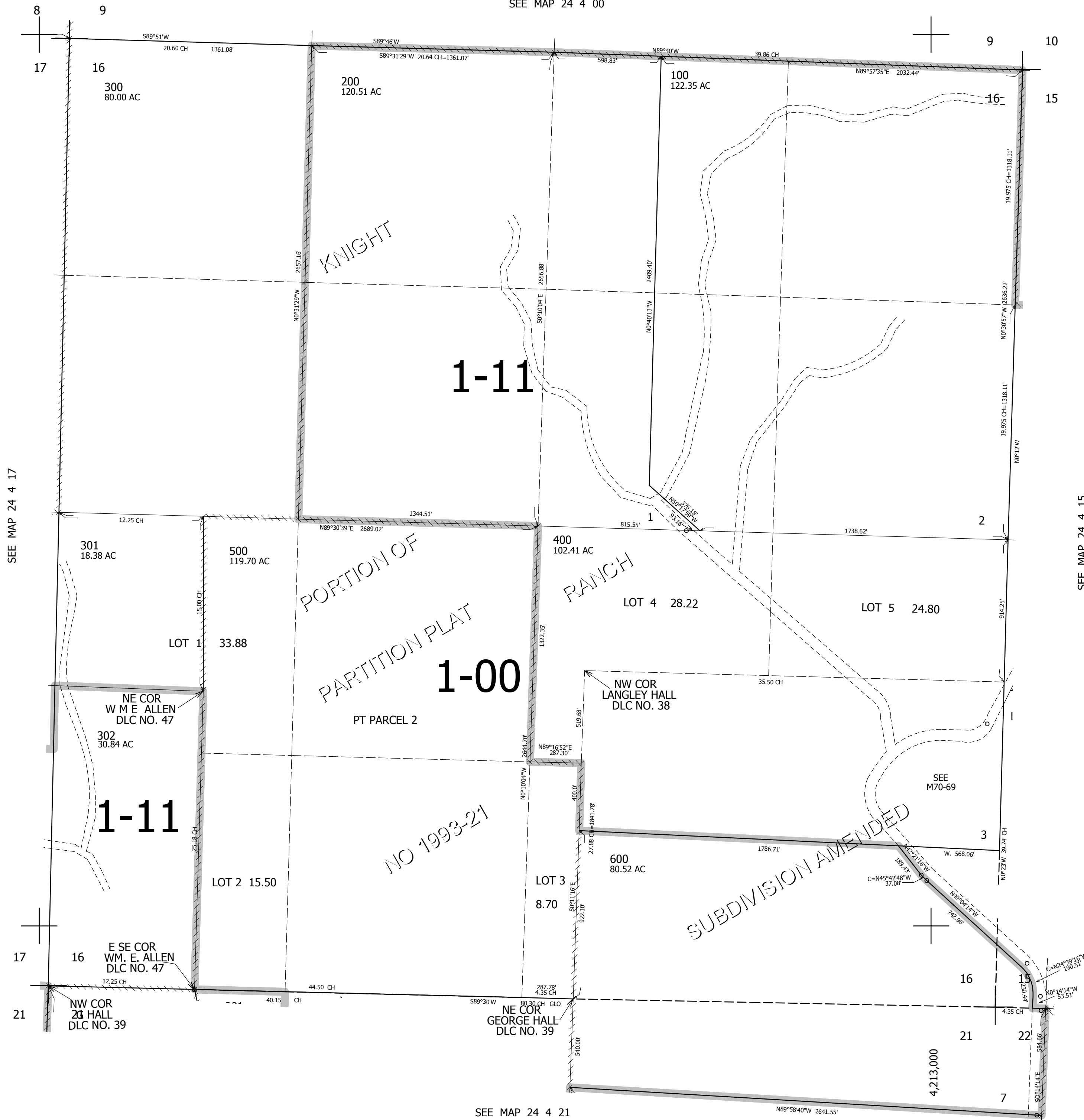
THIS MAP WAS PREPARED FOR ASSESSMENT PURPOSE ONLY.

SEC.16 T.24S. R.4W. W.M.
DOUGLAS COUNTY
1" = 400'

REVISED ON
10-16-13

24 4 16

SEE MAP 24 4 00



CANCELLED NOS

SEE MAP 24 4 17

SEE MAP 24 4 15

SEE MAP 24 4 21

671,000

24 4 16