

SEC.15 T.24S. R.4W. W.M.  
DOUGLAS COUNTY

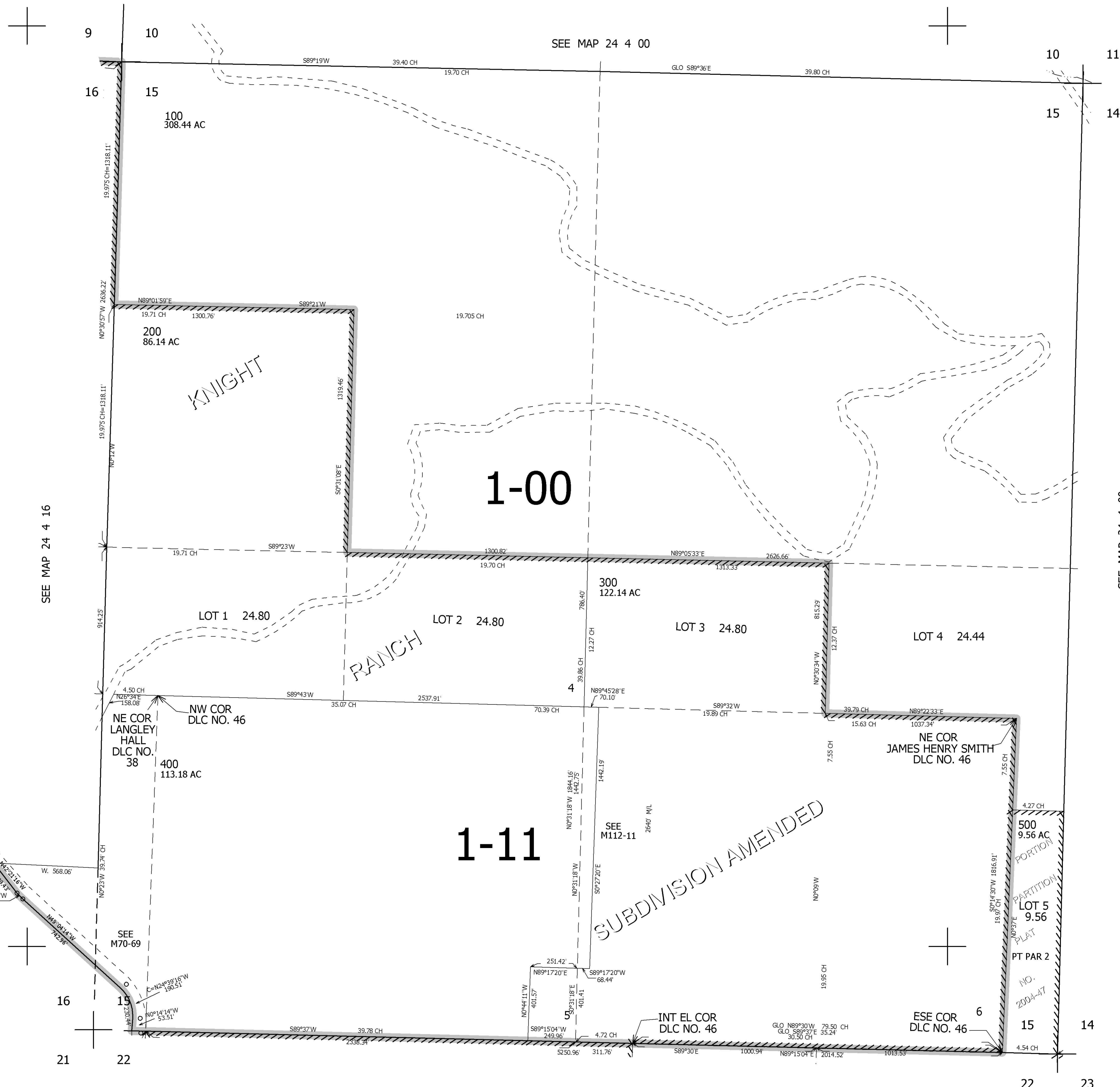
REVISED ON  
9-28-04

24 4 15

THIS MAP WAS PREPARED FOR  
ASSESSMENT PURPOSE ONLY.

1" = 400'

CANCELLED NOS  
301 401



SEE MAP 24 4 16

SEE MAP 24 4 00

SEE MAP 24 4 22

4,218,000

671,000

24 4 15