

THIS MAP WAS PREPARED FOR ASSESSMENT PURPOSE ONLY.

Upper Left:
123°13'57"W 43°30'24"N
4196490E 682450N ft

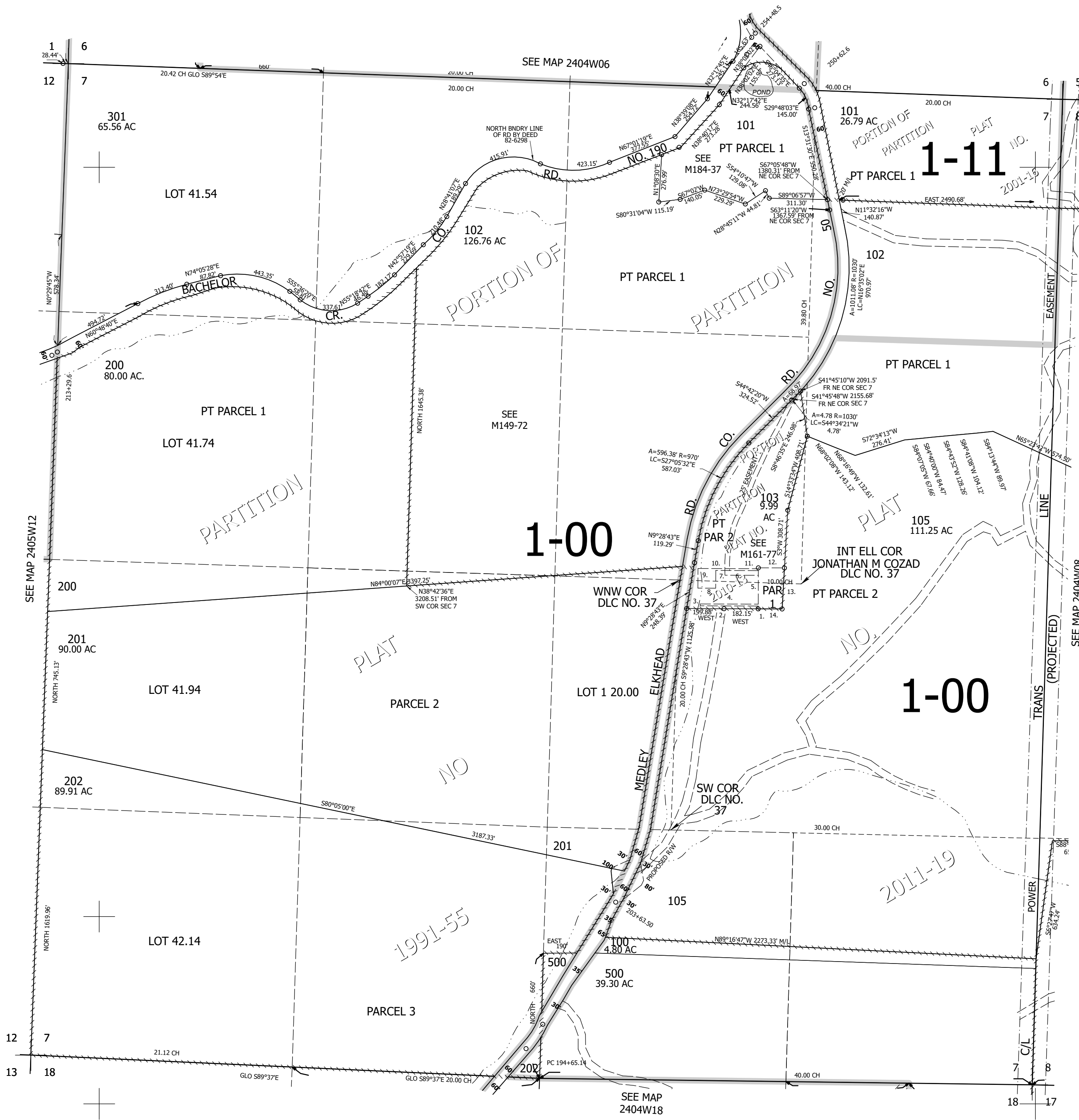
SEC.07 T.24S. R.04W. W.M.
DOUGLAS COUNTY
1" = 400'

Date Expored 2024-11-19

240407

CANCELLED NOS:
300 400 203
104 106

- PP 2010-13
- PARCEL 1
- 1. NORTH 14.99'
- 2. WEST 310'
- 3. NORTH 10'
- 4. EAST 310'
- 5. NORTH 179'
- 6. WEST 227.5'
- 7. SOUTH 95'
- 8. WEST 95'
- 9. NORTH 105'
- 10. EAST 322.5'
- 11. NORTH 5'
- 12. EAST 139.33'
- 13. S3°W 219.29'
- 14. WEST 127.85'



1-00

1-00

1-11

1991-55

2011-19

SEE MAP 2404W18

SEE MAP 2404W08

SEE MAP 2405W12

SEE MAP 2404W06

2001-15

2011-19

SEE MAP 2404W18

240407

Lower Right:
123°12'7"W 43°29'18"N
4204339E 675495N ft