

THIS MAP WAS PREPARED FOR ASSESSMENT PURPOSE ONLY.

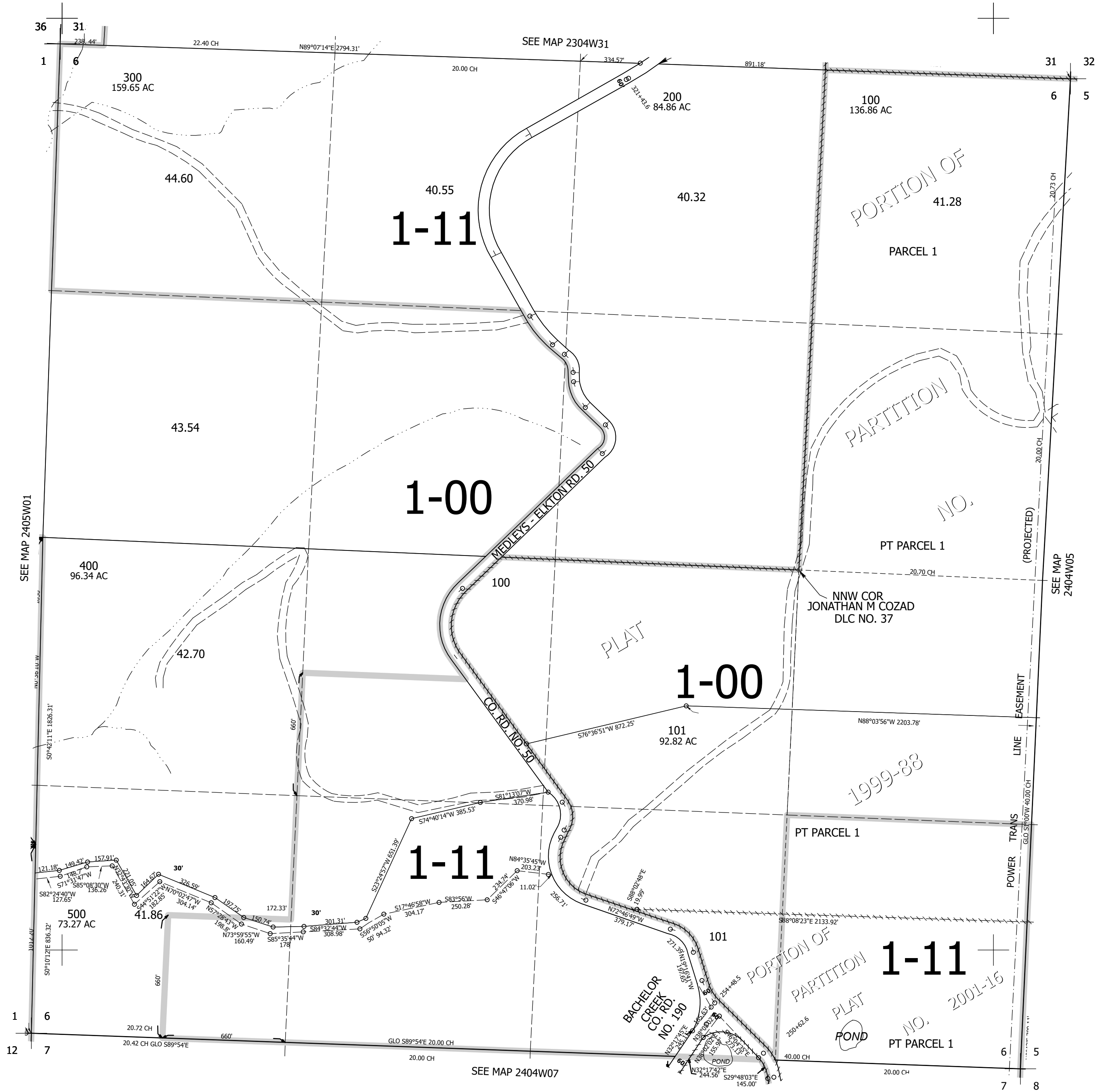
Upper Left:  
123°13'56"W 43°31'15"N  
4196701E 687593N ft

SEC.06 T.24S. R.04W. W.M.  
DOUGLAS COUNTY  
1" = 400'

Date Exported 2025-01-15

240406

CANCELLED NOS:  
401 102



240406

Lower Right:  
123°12'7"W 43°30'9"N  
4204551E 680638N ft