

THIS MAP WAS PREPARED FOR ASSESSMENT PURPOSE ONLY.

T.24S. R.4W. W.M. DOUGLAS COUNTY

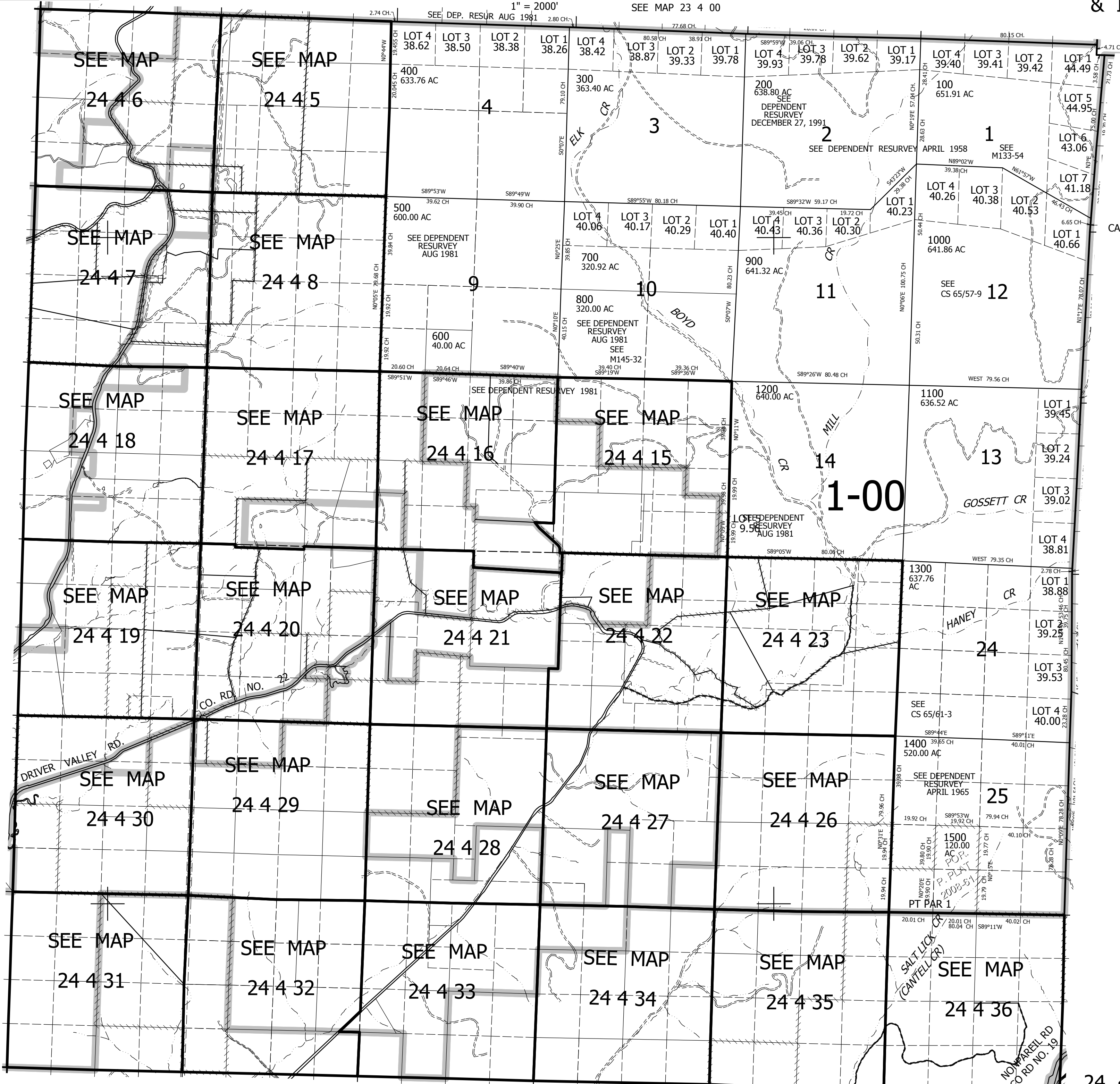
REVISED ON 12-2-08

24 4 00 & INDEX

1" = 2000'

SEE MAP 23 4 00

SEE DEP. RESUR AUG 1981 2.80 CH



CANCELLED NOS

SEE MAP 24 3 00

660,000

24 4 00 & INDEX

SEE MAP 25 4 00

4,220,000