

THIS MAP WAS PREPARED FOR ASSESSMENT PURPOSE ONLY.

NE1/4 SEC.31 T.24S. R.3W. W.M.
DOUGLAS COUNTY
1" = 200'

REVISED ON
7-5-94

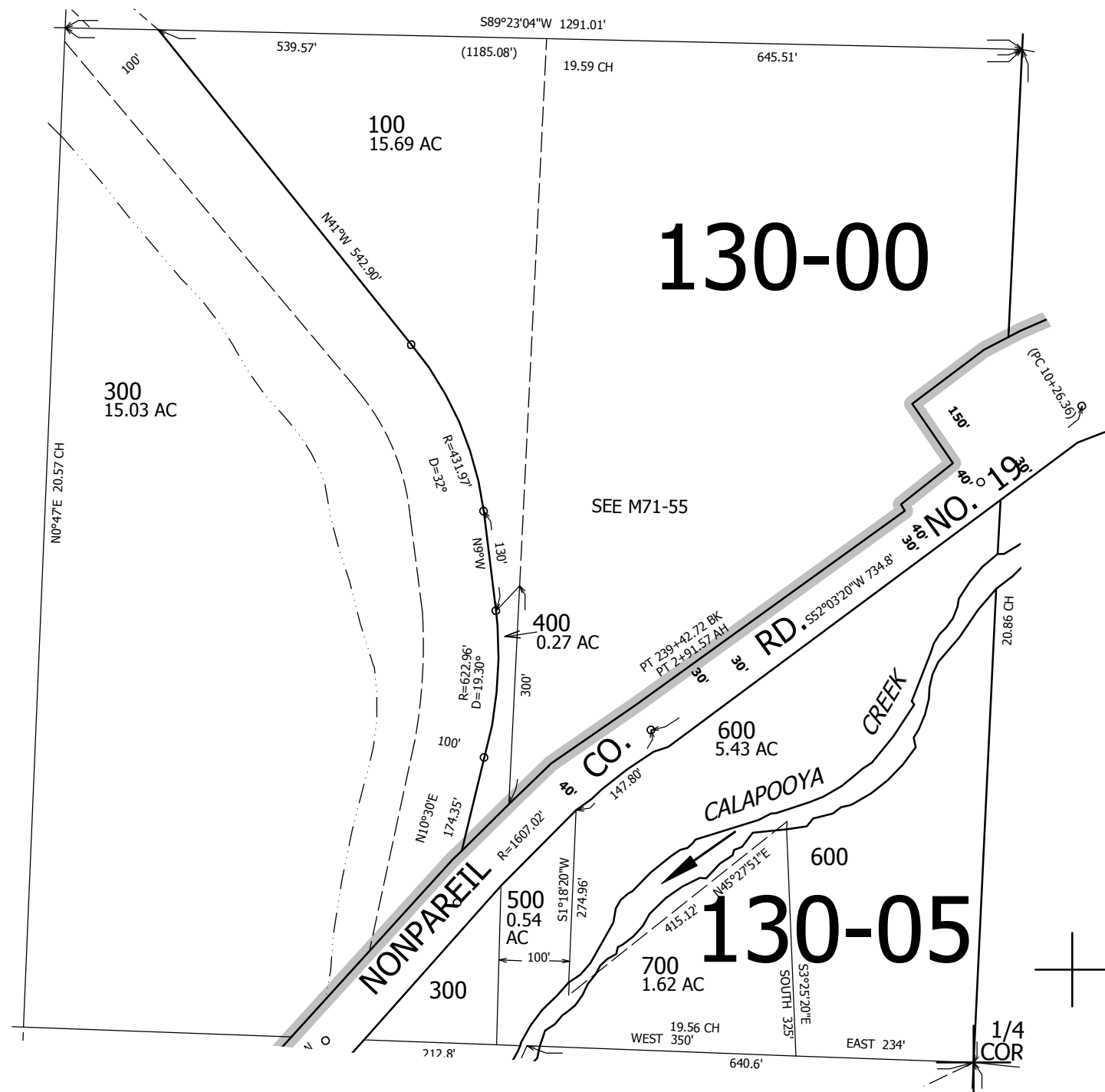
24 3 31A

1/4 COR

30 29
31 32

CANCELLED NOS
200 200M1 100M1
300M1 400M1 500M1
600M 1 700M1

SEE MAP 24 3 31



SEE MAP 24 3 32

CEN SEC

657,000

SEE MAP 24 3 31D

4,234,000

24 3 31A