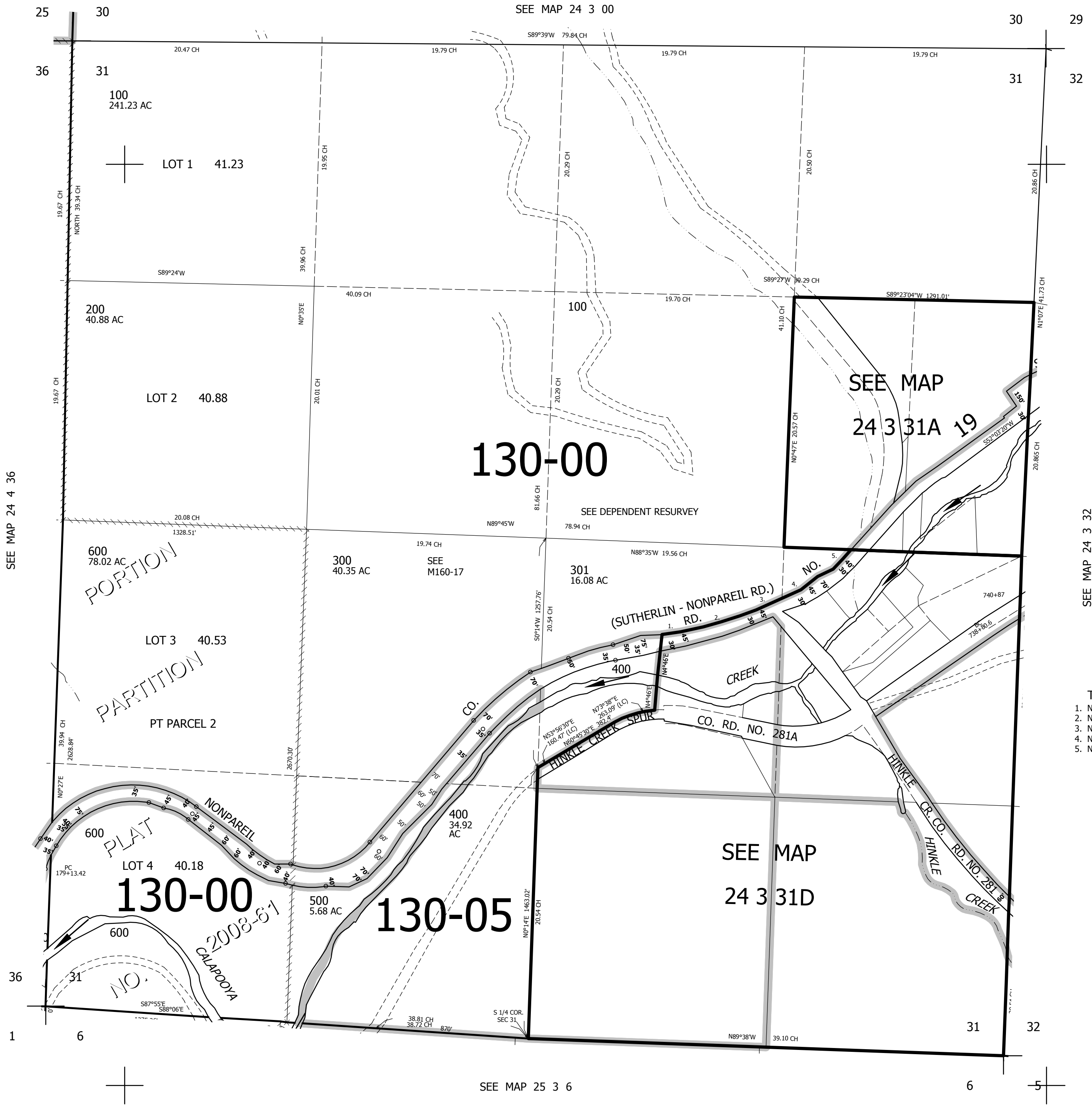


THIS MAP WAS PREPARED FOR  
ASSESSMENT PURPOSE ONLY.

SEC.31 T.24S. R.3W. W.M.  
DOUGLAS COUNTY  
1" = 400'

REVISED ON  
2-27-13

24 3 31  
& INDEX



CANCELLED NOS

SEE MAP 24 3 32

- TAXLOT 301
1. N74°27'30"E 318.56'
  2. N68°04'E 98.11'
  3. N66°41'E 398.21'
  4. N53°43'30"E 211.86'
  5. N60°16'30"E 205.17'

654,000

24 3 31  
& INDEX

4,234,000