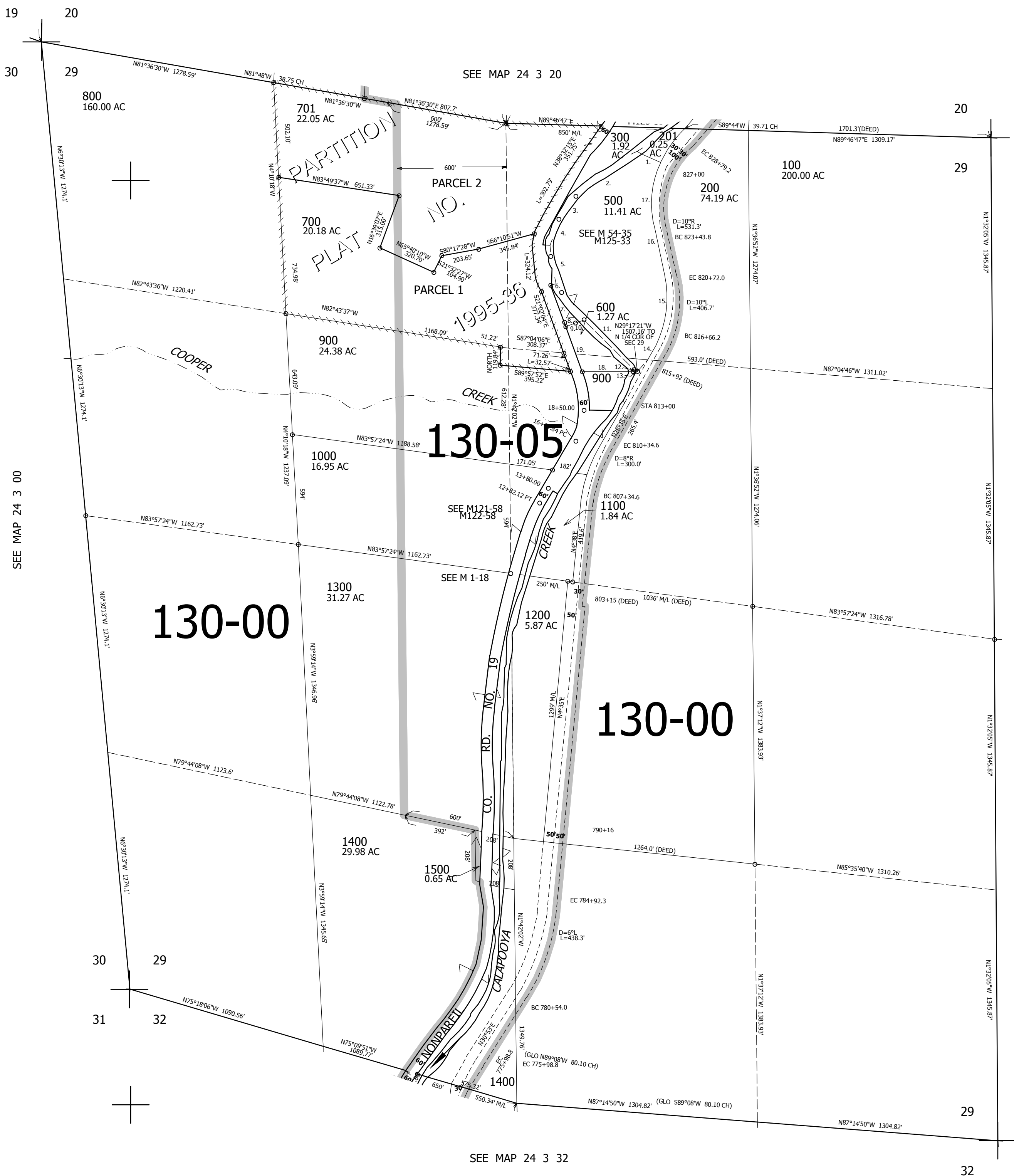


THIS MAP WAS PREPARED FOR ASSESSMENT PURPOSE ONLY.

SEC.29 T.24S. R.3W. W.M.
DOUGLAS COUNTY
1" = 400'

REVISED ON
8-11-20

24 3 29



CANCELLED NOS
400 902 901

- PARCELS 500 & 600
1. N66°29'48"W 114.5'
 2. S54°24'W 400.95'
 3. S45°09'W 152'
 4. S19°16'W 207'
 5. S14°16'E 208'
 6. S80°13'24"W 32.15'
 7. S19°48'28"E 205.85'
 8. S19°48'28"E 24.31'
 9. N63°33'26"E 60.7'
 10. N77°51'50"E 51.85'
 11. S45°28'40"E 381.11'
 12. S28°35'43"W 12.55'
 13. N89°57'30"E 22.86'
 14. N28°35'43"E 168.69'
 15. LC=N8°15'43"E 377.84' A=385.89'
 16. N12°05'W 270.9'
 17. LC=N5°42'58"E 368.84' A=374.83'
 18. S89°57'30"W 274.81'
 19. N21°45'W 258.95'

SEE MAP 24 3 00

SEE MAP 24 3 00

SEE MAP 24 3 32

659,000

4,239,000

24 3 29