

SEC.21 T.24S. R.3W. W.M.
DOUGLAS COUNTY

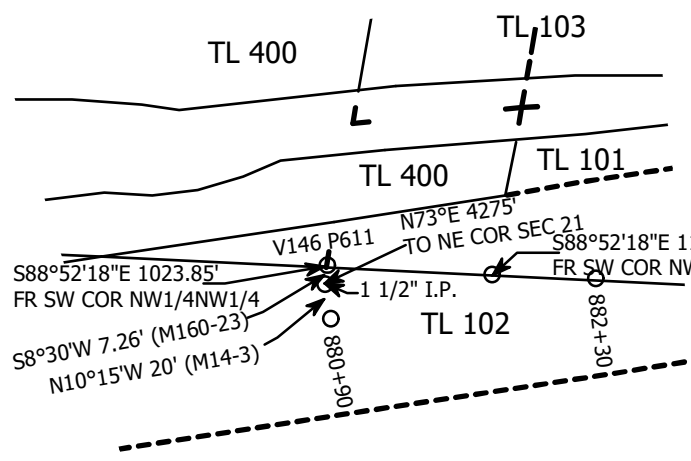
1" = 400'

REVISED ON
5-15-14

24 3 21

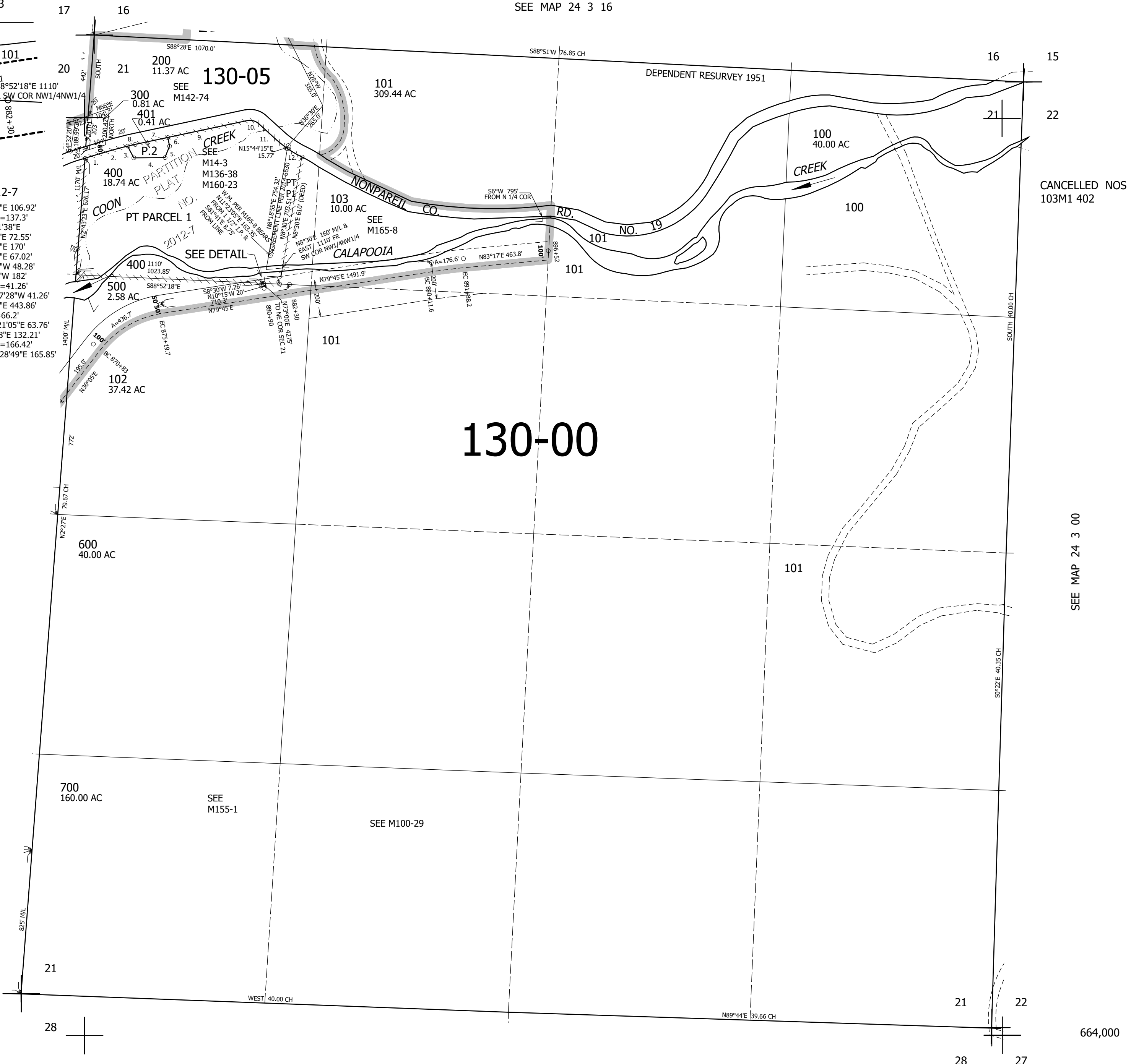
THIS MAP WAS PREPARED FOR
ASSESSMENT PURPOSE ONLY.

DETAIL TAXLOT 101
SCALE: 1" = 100'



PP 2012-7

1. N71°21'53"E 106.92'
2. R=1970' A=137.3'
LC=N73°21'38"E
3. S29°02'25"E 72.55'
4. N88°00'00"E 170'
5. N20°15'19"E 67.02'
6. N13°26'31"W 48.28'
LC=S75°57'28"W 41.26'
7. S76°33'29"W 182'
8. R=1970' A=41.26'
LC=S75°57'28"W 41.26'
9. N76°33'29"E 443.86'
10. R=70' A=66.2'
LC=S76°21'05"E 63.76'
11. S49°15'38"E 132.21'
12. R=580' A=166.42'
LC=S57°28'49"E 165.85'



SEE MAP 24 3 20

SEE MAP 24 3 16

CANCELLED NOS
103M1 402

SEE MAP 24 3 00

130-00

SEE
M155-1

SEE M100-29

SEE MAP 24 3 00

664,000

4,244,000

24 3 21