

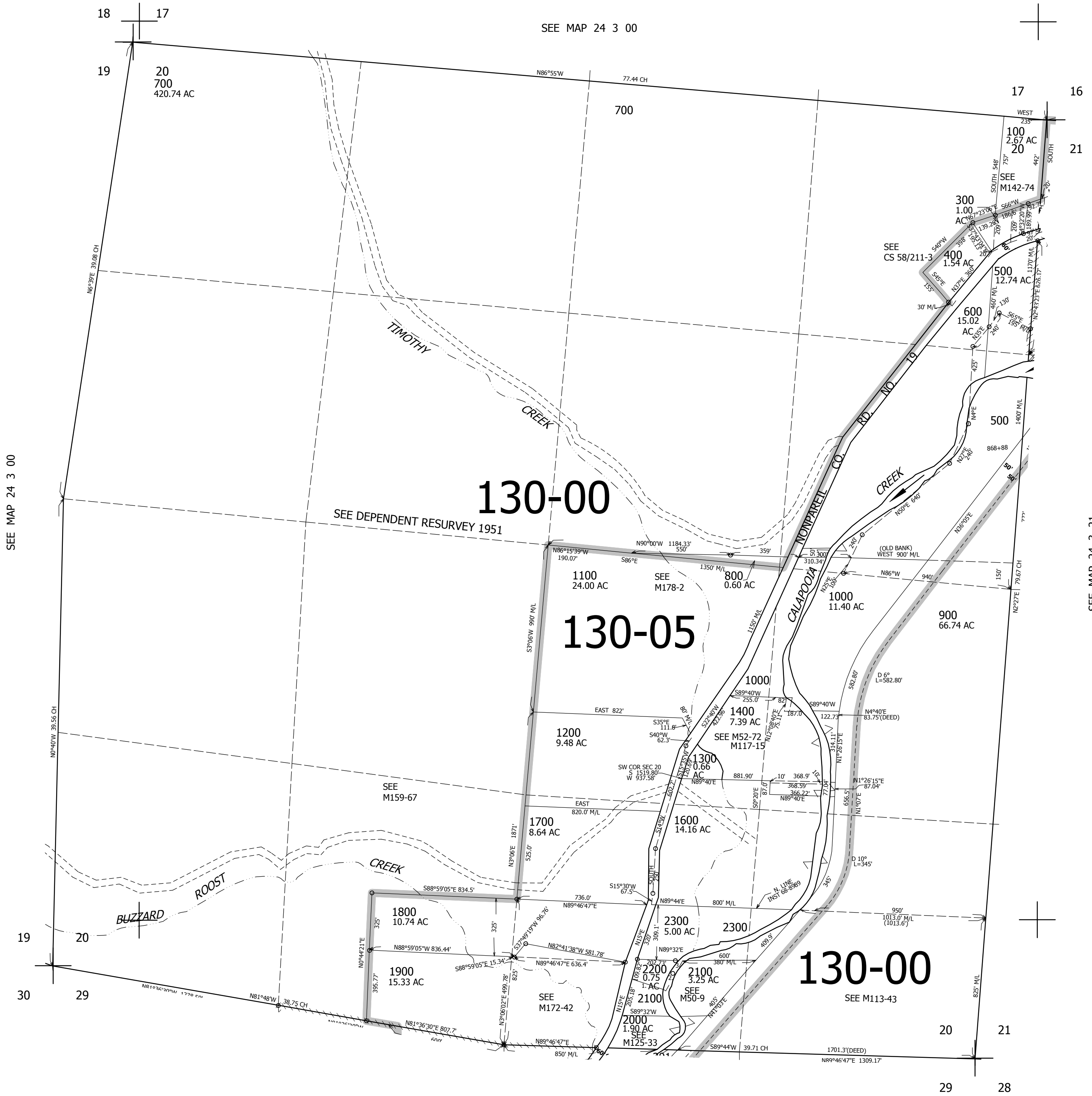
THIS MAP WAS PREPARED FOR ASSESSMENT PURPOSE ONLY.

SEC.20 T.24S. R.3W. W.M. DOUGLAS COUNTY

REVISED ON 11-2-20

24 3 20

1" = 400'



CANCELLED NOS
1500 200 201
601 1801

SEE MAP 24 3 21

PARCEL 2000
1. S73°55'32"E 205.73'
2. N23°00'E 102.94'
3. N50°00'E 109.95'

655,000

SEE MAP 24 3 29

4,239,000

24 3 20