

THIS MAP WAS PREPARED FOR ASSESSMENT PURPOSE ONLY.

# T.24S. R.3W. W.M. DOUGLAS COUNTY

1" = 2000'

REVISED ON 6-11-02

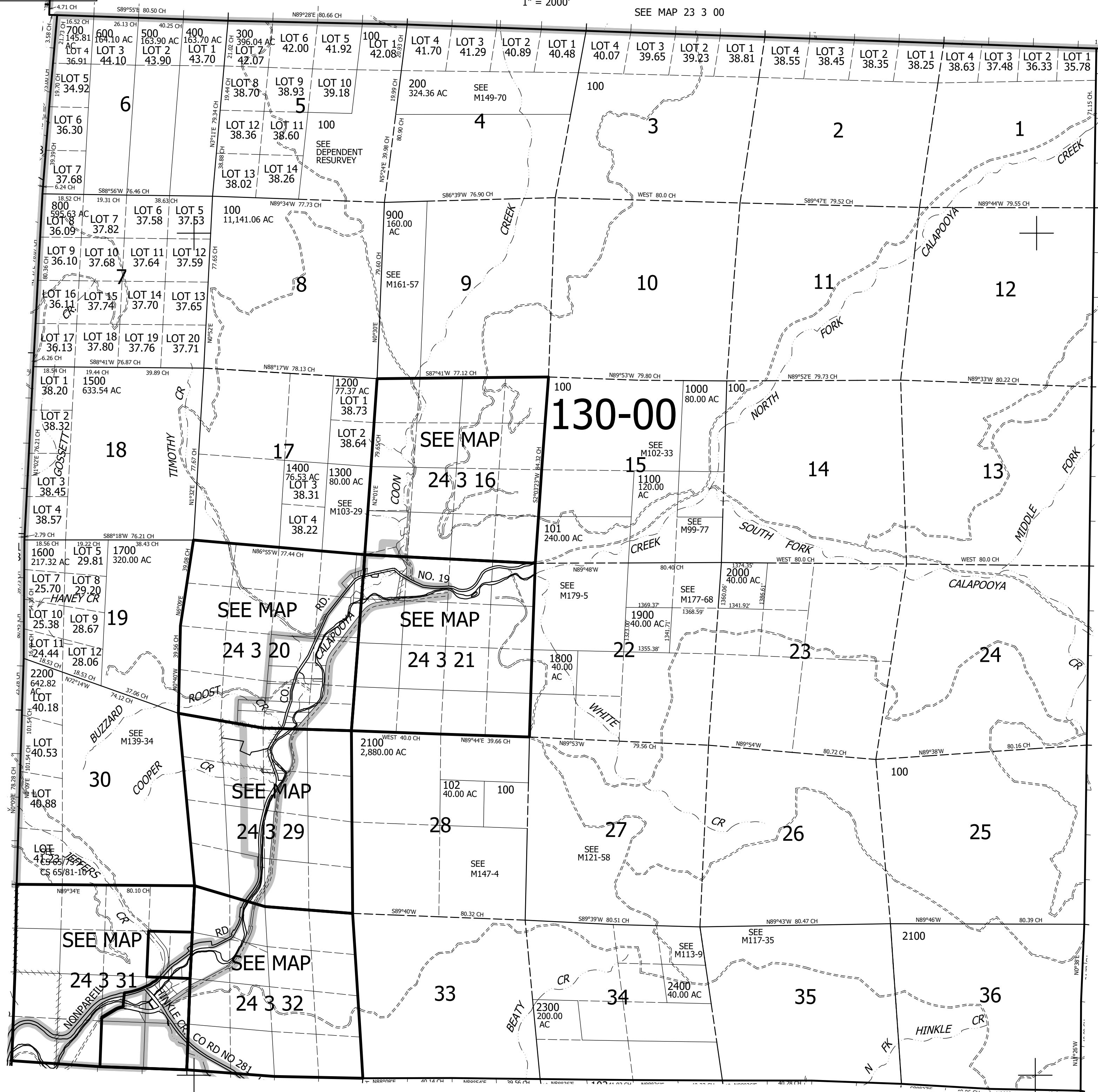
## 24 3 00 & INDEX

SEE MAP 23 3 00

CANCELLED NOS 400M1 600M1 2300M1

SEE MAP 24 4 00

SEE MAP 24 2 00



SEE MAP 25 3 00

## 24 3 00 & INDEX

4,259,000