

THIS MAP WAS PREPARED FOR ASSESSMENT PURPOSE ONLY.

T.24S. R.2W. W.M. DOUGLAS COUNTY

REVISED ON 7-13-00

CANCELLED NOS 700M1 701M1 2400M1 2600M1 2700M1

24 2 00

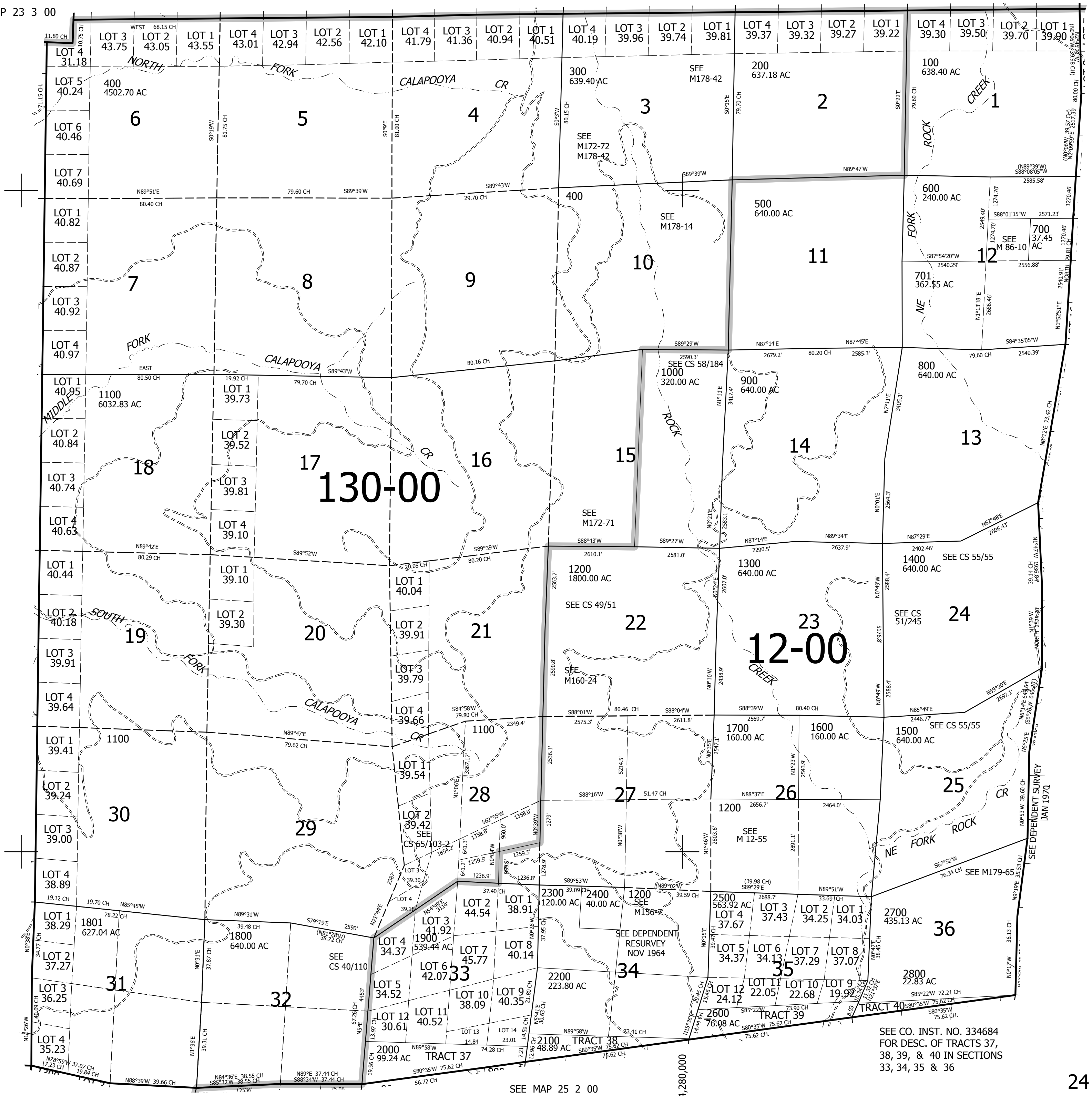
1" = 2000' SEE MAP 23 2 00

SEE MAP 23 3 00

SEE MAP 24 3 00

SEE MAP 24 1 00

660,000



SEE CO. INST. NO. 334684 FOR DESC. OF TRACTS 37, 38, 39, & 40 IN SECTIONS 33, 34, 35 & 36

SEE MAP 25 2 00

24 2 00