

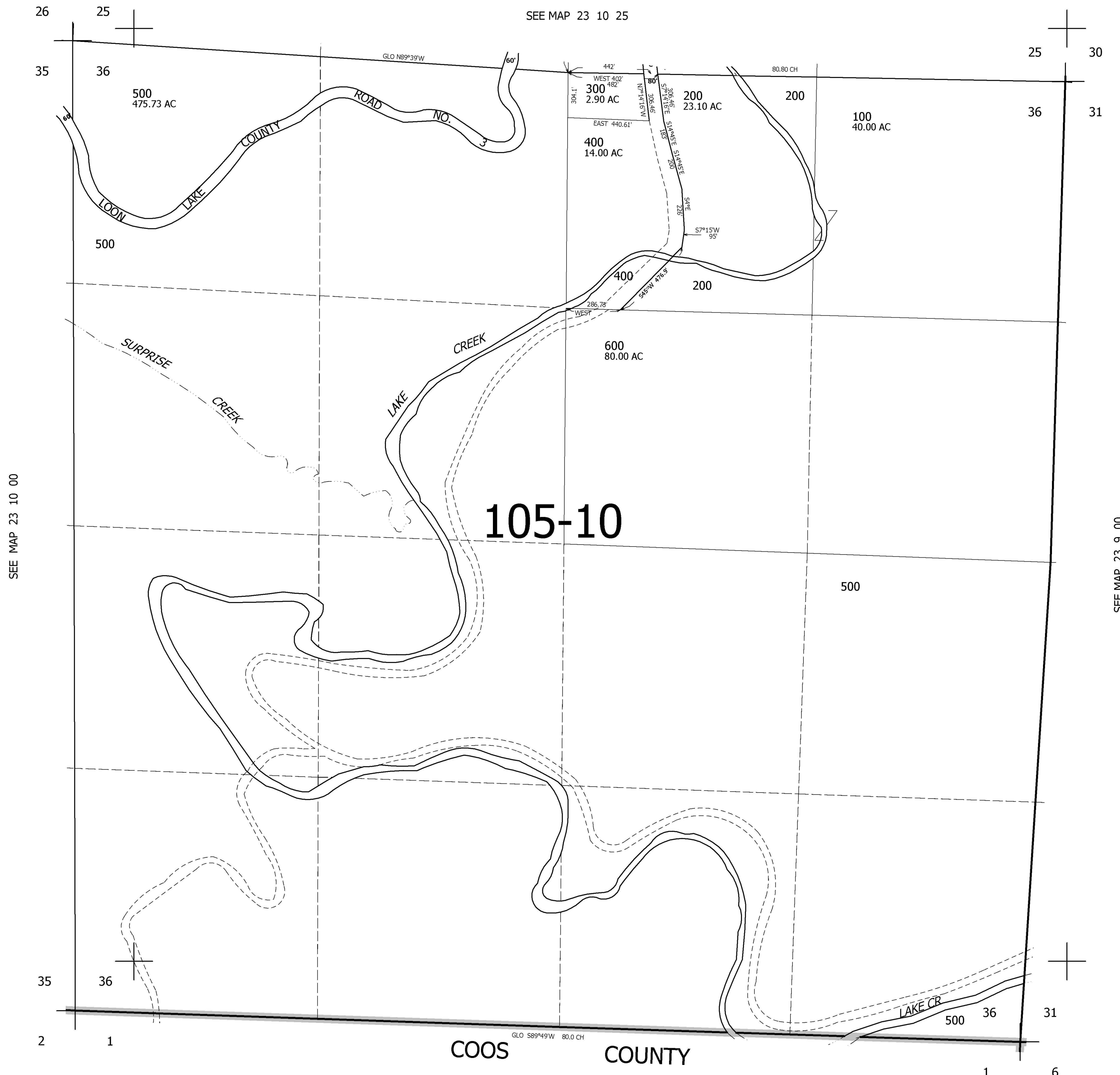
THIS MAP WAS PREPARED FOR
ASSESSMENT PURPOSE ONLY.

SEC. 36 T.23S. R.10W. W.M.
DOUGLAS COUNTY

1" = 400'

REVISED ON:
3-27-95

23 10 36



105-10

CANCELLED NOS

692,000

4,041,000

23 10 36