

THIS MAP WAS PREPARED FOR ASSESSMENT PURPOSE ONLY.

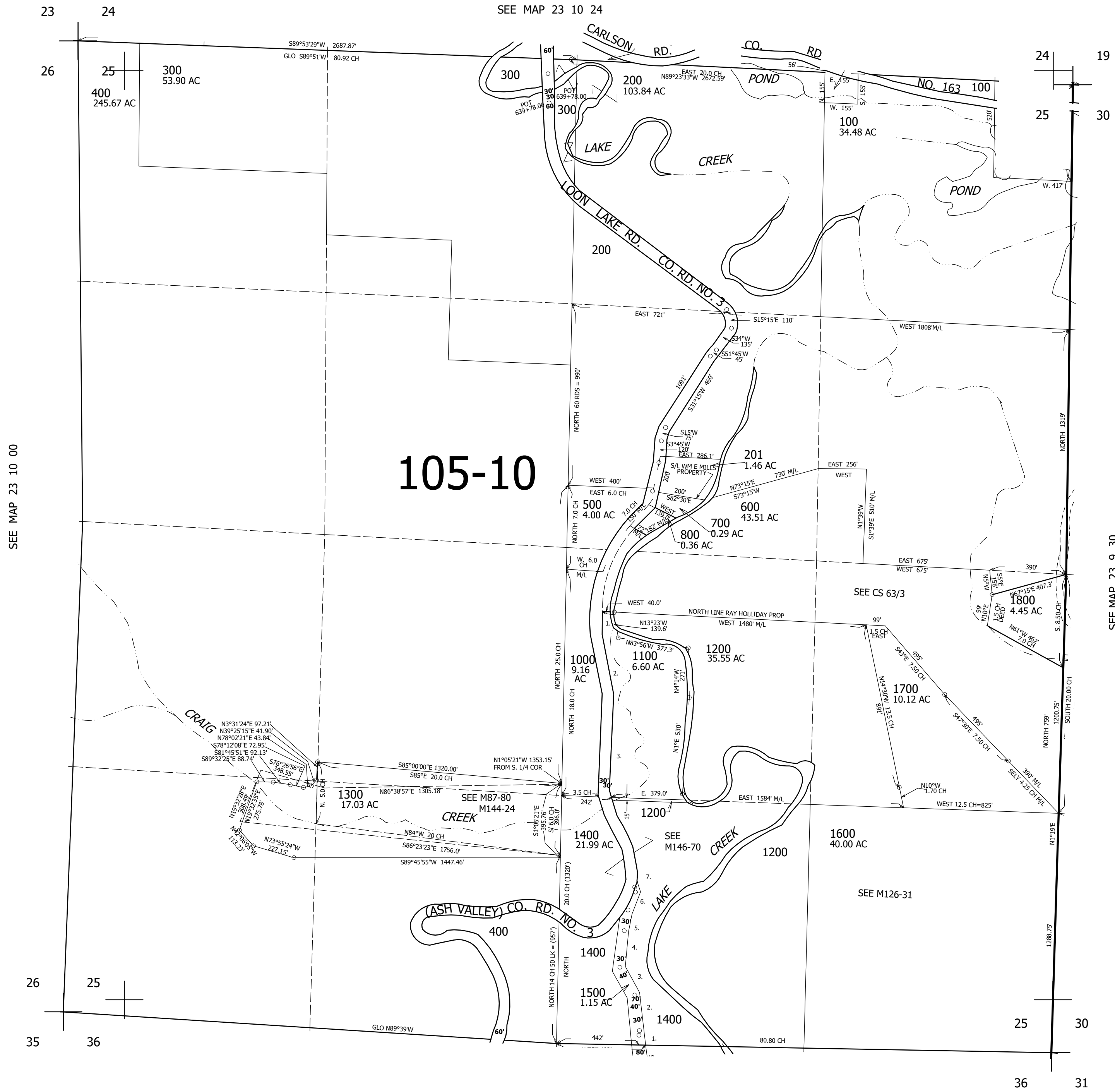
SEC. 25 T.23S. R.10W. W.M. DOUGLAS COUNTY

REVISED ON
3-7-07

23 10 25

1" = 400'

SEE MAP 23 10 24



SEE MAP 23 10 00

CANCELLED NOS
1000A1 900 401
1401 1201

SEE MAP 23 9 30

PARCEL 1500

- C/L COURSES
1. N3°30'W 23'
 2. N9°45'W 190'
 3. N30°46'52"W 170.14'
 4. N3°E 200'
 5. N8°10'E 114'
 6. N19°E 104'
 7. N22°W 21.11'

PARCEL 1100

1. S1°50'E 125'
2. S14°34'E 329.5'
3. S0°52'W 531.1'

697,000

SEE MAP 23 10 36

4,042,000

23 10 25